

cottover®



COTTOVER COLLECTION 2025



COTTOVER®

CONSCIOUS CHOICES

Do you appreciate quality clothes and want to protect both people and the environment? More and more people think like you. Clothing consumption can pose a large environmental problem. Manufacturing often relies on substandard working conditions and a process that increases the environmental burden. On cotton plantations often outdated and harmful pesticides are being used that have a negative impact on both nature and the people working in the cotton fields. The most negative impact is yet in the after processes such as spinning, knitting and most of all, dyeing. All chemicals used when dyeing equal the culturing of cotton. Manufacturing clothes requires a lot of resources in terms of water and together with the amount of disposed garments it has a big impact on both energy and the environment, but it doesn't have to be like that.

Consumption is positive since it is needed for trade. Trade is a necessity for the economy which creates jobs and wealth. Almost all reduction of extreme poverty has taken place in countries that are integrated with other countries by trade and the establishment of multinational companies whereas most countries that have risen from poverty and become industrialized have used the textile industry as a springboard, but it must be done in a fair and controlled way.

When you choose something from our Cottover collection, the third-party certifications guarantee that we meet the highest requirements when it comes to the environment, health and quality for both producers and ready products. All licensed producers operate under fair conditions and only work with approved ingredients to meet the requirements.

We provide sustainable products of good quality that are manufactured to last, and be used, for a long time. We have developed the sustainable clothes, but it is primarily you that makes a difference when you choose certified products instead of conventional.

Although it seems complicated, it's actually easy. Just choose products with third-party certifications and you will know for sure that the products have been manufactured in a sustainable way.

CERTIFICATES

Fairtrade is an international standard which certifies the cotton in the garment and fights poverty for cotton farmers by securing fair trade. The cotton farmer is guaranteed a minimum price to cover the cost for a sustainable production. That is the reason why Cottover use Fairtrade certified cotton.

GOTS is an international standard for clothes and textile. GOTS products always contain organic cotton and recycled polyester. GOTS sets high standards regarding fabric, quality, environment and social responsibility. Apart from this, GOTS also guarantees full traceability throughout the production chain.

Oeko-Tex is the world's most well-known and independent label for textiles that have been tested for harmful chemicals. The certification enables us as a company, as well as you as a consumer, to make responsible decisions that protect our planet for the future. Oeko-Tex takes into account regulated substances such as azo dyes, formaldehyde and nickel, as well as chemicals that have not yet been regulated by law.





CERTIFIED COTTON CLOTHING

COTTOVER®

TEES & TOPS

A generic certified tee with a classic fit for both men, women and kids.
Wide spectrum of colors, wide range of sizes.
A no-brainer when looking for a fair and long-lasting tee.



T-SHIRT MAN
141008 | S-4XL
(100, 460, 855, 980, 990: XS-6XL)

T-SHIRT LADY
141007 | XS-XXL
(100, 460, 855, 980, 990: XS-4XL)

T-SHIRT KID ★
141023 | 90/100-150/160

Roundneck T-shirt for men, women and children made in a cool, fine quality cotton. Modern fit.

Material: 100% organic Fairtrade cotton
Color 955:
85% organic Fairtrade cotton,
15% viscose

Weight: 160 g/m²

 = NEW COLORS





CERTIFIED
COLORCRAZY
CLOTHING



T-SHIRT LONG SLEEVE MAN
141020 | S-4XL
T-SHIRT LONG SLEEVE LADY
141019 | XS-XXL

T-shirt with long sleeves for men and women. Made from a cool, fine quality cotton. Modern fit.

Material: 100% organic Fairtrade cotton
Weight: 160 g/m²



T-SHIRT V-NECK MAN
141022 | S-4XL
(100, 460, 855, 990: XS-6XL)
T-SHIRT V-NECK LADY
141021 | XS-XXL
(100, 460, 855, 990: XS-4XL)

V-neck T-shirt for men and women made in a cool, fine quality cotton. Modern fit.

Material: 100% organic Fairtrade cotton
Weight: 160 g/m²



HEADBAND
141027 | One Size

Single jersey headband with element of elastane for better fit.

Material: 96% organic Fairtrade cotton, 4% elastan
Weight: 200 g/m²



BEANIE
141024 | One Size

Single jersey hat with elements of elastane for better fit. Decorative tone-in-tone overlock seams in the top. Unisex.

Material: 96% organic Fairtrade cotton, 4% elastan
Weight: 200 g/m²





COTTOVER®

ADDITIONAL FIT & FORM

If there is a rule there are always exceptions.
We have added some elements to the classic
tee to meet the contemporary preferences.

STRETCH R-NECK MAN
141026 | S-3XL
STRETCH V-NECK LADY
141025 | XS-XXL

Modern T-shirt in stretch material, men`s style with round
neck and ladies` style with v-neck, both slim fit.
Material: 96% organic Fairtrade cotton ,
4% elasthan
Weight: 160 g/m²



NEW!
TANKTOP LADY
141057 | XS-XXL

Classic tank top with wide shoulder straps in a neatly slightly
curved model. Piping around neckline and armholes. Printed
label at the neck.

Material: 100% organic Fairtrade cotton
Weight: 160 g/m²



NEW!
TOP LADY
141059 | XS-XXL

Feminine top in a generously sized model with a nice drape.
Hollow sleeve and decorative boat neckline with piping.
Printed label at the neck.

Material: 100% organic Fairtrade cotton
Weight: 160 g/m²





NEW!

OVERSIZE T-SHIRT
141050 | XXS-4XL

Oversized T-shirt in a relaxed unisex fit. Soft and flexible material. Thick collar and side slits. Printed neck label.

Material: 100% organic Fairtrade cotton
Color 955:
85% organic Fairtrade cotton,
15% viscose
Weight: 180 g/m²



Care:



Certifications:



Color 955:



NEW!

RELAXED LS UNISEX
141060 | XXS-4XL

Long sleeved T-shirt in loose fit for a generous but not oversized silhouette. Nice external round neckline, straight cuffs and straight cut hem. Printed label at the neck.

Material: 100% organic Fairtrade cotton
Weight: 160 g/m²



Care:



Certifications:





CERTIFIED COWORKER CLOTHING



COTTOVER®

POLO PIQUE

The Tee's dressed up older sibling. Just as comfortable and colorful but another expression. The cut is classic because this is a very classic garment. Our stretch piqué, however, adds an extra element of fashion and flair.

STRETCH PIQUE MAN 141506 | S-4XL STRETCH PIQUE LADY 141505 | XS-XXL

Men's polo pique in stretch quality made of organic Fairtrade cotton with elements of elastan for a better fit. Ribbed collar and cuff, slit at the bottom

Material: 96% organic Fairtrade cotton
4% elastan
Color 955:
90% organic Fairtrade cotton
6% viscose, 4% elastane
Weight: 200 g/m²



Care:



Certifications:



Color 955:



PIQUE MAN 141006 | S-4XL (100, 460, 855, 980, 990: XS-5XL) PIQUE LADY 141005 | XS-XXL (100, 460, 855, 980, 990: XS-3XL)

Short sleeve polo for men and women with a classic pique knitting. Knitted ribbing on collar and sleeve cuffs, two buttons with reinforced placket. Slits at the bottom edge. Modern fit.

Material: 100% organic Fairtrade cotton
Weight: 200 g/m²



Care:



Certifications:



Color 955:



PIQUE LONG SLEEVE MAN 141018 | S-4XL PIQUE LONG SLEEVE LADY 141017 | XS-XXL

Polo with long sleeves in a classic pique knit for men and women. Knitted ribbing on the collar and sleeve cuffs on the men's style. Two buttons with reinforced placket, side slits at the bottom edge. Modern fit.

Material: 100% organic Fairtrade-cotton
Weight: 200 g/m²



Care:



Certifications:



Color 955:





CERTIFIED CERISE CLOTHING

SWEATSHIRTS & PANTS

Our sweats come in three different families:
The classic line focuses on color and are perfectly combinable with our tees and polos.
The Key line is heavier with a contemporary color range and the French Terry line...o la la, the treat to every sweat lover.

HOOD MAN
141002 | S-4XL
HOOD LADY
141001 | XS-XXL
HOOD KID ★
141011 | 90/100-150/160

Hooded sweatshirt with brushed lining. Hood of two-layered material with a robust drawstring. No drawstring for Hood Kid. External pocket on front. 2x2 ribbing on the sleeve edge and bottom hem. Modern fit, ladie's model is slightly narrow in fit.

Material: 80% organic Fairtrade cotton, 20% recycled polyester
Weight: 280 g/m²



CREW NECK MAN
141003 | XXS-4XL
[100, 460, 855, 980, 990: XXS-5XL]
CREW NECK LADY
141004 | XS-XXL
[100, 460, 855, 980, 990: XS-3XL]
CREW NECK KID ★
141015 | 90/100-150/160

Sweatshirt with round neck and brushed lining. 2x2 ribbing on the collar edge, end of sleeves and bottom hem. Decorative seams in overlock knit set in a tone-in-tone feature. Modern fit.

Material: 80% organic Fairtrade cotton, 20% recycled polyester
Weight: 280 g/m²



Applies on all items on this page:
Care:



HALF ZIP UNISEX
141012 | S-4XL

Halfzip sweatshirt with brushed lining in unisex sizes. Two front pockets, 2x2 ribbing on sleeve edge and bottom hem. Modern fit.

Material: 80% organic Fairtrade cotton, 20% recycled polyester
Weight: 280 g/m²



FULL ZIP HOOD MAN
141010 | S-4XL
[100, 460, 855, 980, 990: XS-5XL]
FULL ZIP HOOD LADY
141009 | XS-XXL
[100, 460, 855, 980, 990: XS-3XL]

Hooded fullzip sweatshirt with brushed lining for men and women. Hood with robust drawstring, two external pockets on front, 2x2 ribbing on end of sleeves and bottom hem. Modern fit, ladie's model is slightly narrow in fit.

Material: 80% organic Fairtrade cotton, 20% recycled polyester
Weight: 280 g/m²



SWEAT PANTS MAN
141014 | S-3XL
SWEAT PANTS LADY
141013 | XS-XXL
SWEAT PANTS KID
141016 | 90/100-150/160

Sweatpants with brushed lining for men, women and children. Robust drawstring in waist, two side pockets, and a rear pocket on men's style. Straight leg ends.

Material: 80% organic Fairtrade cotton, 20% recycled polyester
Weight: 280 g/m²



Applies on all items on this page:
Care:





CERTIFIED CREATIVE CLOTHING



NEW!

KEY HOOD UNISEX

141212 | XXS-4XL

Hoodie in a comfortable, soft and slightly heavier material with brushed inside. Drawstring hood with details in antique silver metal. Double-stitched hood in a two layered fabric. 2x2 ribs in sleeves, end and bottom.

Material: 85% organic Fairtrade cotton, 15% recycled polyester

Weight: 320 g/m²



155 Dk Sand 470 Burgundy 675 Dk Green 748 Dusty Blue 855 Navy 990 Black

KEY CREW NECK UNISEX

141203 | XXS-4XL

Well made sweatshirt in a comfortable material, soft and with a little heavier feel. Brushed inside. 2x2 rib around neck, cuffs and bottom.

Material: 85% organic Fairtrade cotton, 15% recycled polyester

Weight: 320 g/m²



NEW COLORS!



155 Dk Sand 448 Dusty Red 470 Burgundy 648 Dusty Green 675 Dk Green 748 Dusty Blue 855 Navy 990 Black



NEW!

KEY SHORTS UNISEX

141214 | XXS-4XL

Shorts in sweatshirt material with brushed inside and side pockets. Wide waistband in 2x2 ribs with a strong elastic and drawstring with details in antique silver metal. Stylish decorative stitching enhances the garment.

Material: 85% organic Fairtrade cotton, 15% recycled polyester

Weight: 320 g/m²



155 Dk Sand 675 Dk Green 748 Dusty Blue 855 Navy 990 Black

KEY FZ HOOD MAN

141210 | S-4XL

KEY FZ HOOD LADY

141209 | XS-XXL

Well made full zip hood in a comfortable material, soft and with a little heavier feel. Brushed inside. YKK Vislon®-zipper in anthracite grey. Drawstring in hood with details in antique silver metal. Kangaropockets. Hood with double seams and lining in single jersey. 2x2 rib around cuffs and bottom.

Material: 85% organic Fairtrade cotton, 15% recycled polyester

Weight: 320 g/m²



448 Dusty Red 648 Dusty Green 748 Dusty Blue 855 Navy 990 Black

Applies on all items on this page:

Care:

Certifications:





COTTOVER COLOR CHART

 00 WHITE	 7499 C 105 OFFWHITE	 WG 3 C 155 DARK SAND	 123 C 255 YELLOW	 1585 C 290 ORANGE
 708 C 425 PINK	 214 C 435 CERISE	 163 U 448 DUSTY RED	 200 C 460 RED	 1685 C 462 RUST RED
 7645 C 470 BURGUNDY	 462 C 540 BROWN	 5595 C 620 PISTAGE	 360 C 645 GREEN	 5625 U 648 DUSTY GREEN
 554 C 648 DARK GREEN	 543 C 725 SKY BLUE	 7542 C 730 MISTY BLUE	 647 U 748 DUSTY BLUE	 287 C 767 ROYAL BLUE
 655 C 855 NAVY	 5235 C 880 LAVENDER	 269 C 885 PURPLE	 432 C 980 CHARCOAL	 990 BLACK
 955 GREY MELANGE	 665 DARK OLIVE CANVAS	 716 LIGHT BLUE OXFORD	 820 BLUE DENIM	 840 DARK BLUE DENIM

MIXED THREAD COLORS

CERTIFIED COACH CLOTHING



F. TERRY FZ COLLAR MAN
141512 | S-4XL
F. TERRY FZ COLLAR LADY
141511 | XS-XXL

Full zip sweatshirt with a heavier feel in French terry (looped inside). Visible YKK zippers with antique silver metallic details. Shaped double collar with 2x2 rib on the inside. Smooth fabric cuff at the bottom and 2x2 rib at sleeve cuffs

Material: 80% organic Fairtrade cotton
20% recycled polyester
Color 955:
80% organic Fairtrade cotton,
14% recycled polyester, 6% viscose
Weight: 350 g/m²



F. TERRY FZ HOOD MAN
141510 | S-4XL
F. TERRY FZ HOOD LADY
141509 | XS-XXL

Classic hoodie with a heavier feel in French terry (looped inside). 2x2 rib at the bottom edge and cuffs. Shaped hood with double seams and drawstring. Visible YKK zippers with antique silver metallic details. Full zip all way up the collar and front pockets with zippers.

Material: 80% organic Fairtrade cotton
20% recycled polyester
Color 955:
80% organic Fairtrade cotton,
14% recycled polyester, 6% viscose
Weight: 350 g/m²



F. TERRY CREW NECK MAN
141504 | S-4XL
F. TERRY CREW NECK LADY
141503 | XS-XXL

Well-made sweatshirt with a heavier feel made in french terry (looped inside). 2x2 rib around the neck, cuffs and bottom. Decorative seams in overlock. Relaxed fit.

Material: 80% organic Fairtrade cotton,
20% recycled polyester
Color 955 :
80% organic Fairtrade cotton,
14% recycled polyester, 6% viscose
Weight: 350 g/m²



F. TERRY PANTS MAN
141514 | S-4XL
F. TERRY PANTS LADY
141513 | XS-XXL

Well-made pants with a heavier feel made in french terry (looped inside). Front pockets with 2x2 rib. Elasticated waist with 2x2 rib and drawstring. All tone in tone. Details in an antique silver metallic color. Cuffs at leg ends. Decorative seams in overlock.

Material: 80% organic Fairtrade cotton
20% recycled polyester
Color 955:
80% organic Fairtrade cotton,
14% recycled polyester, 6% viscose
Weight: 350 g/m²



Applies on all items on this page:
Care:





COTTOVER®

SHIRTS

Everybody loves a good shirt and just as the tee and the polo, it is a cornerstone in the wardrobe. Our four models come in three cuts, slim fit Man, Comfort Man and Ladies' Fit. These shirts are casual, comfortable, clean cut. What more can you expect? Well, certified of course.

DENIM SLIM FIT MAN

141046 | 36-38

DENIM COMFORT MAN

141036 | 36-38

DENIM LADY

141035 | 34-46

Shirt in denim fabric with a soft feel. The shirt is enzyme treated which gives each shirt a natural and unique look. Cut away collar on men and turn down on lady. Men in Slim fit and Comfort, lady with two darts in the back, to give a tailored silhouette. Weight 6.5 oz.

Material: 100% organic Fairtrade cotton
Weight: 185 g/m²



OXFORD SLIM FIT MAN

141032 | 36-38

OXFORD COMFORT MAN

141042 | 36-38

OXFORD LADY

141031 | 34-46

Classic oxford shirt with button down collar on men's style and turn down collar on ladies. Slim fit.

Material: 100% organic Fairtrade cotton
Weight: 145 g/m²



POPLIN COMFORT MAN

141052 | 36-38

POPLIN SLIM FIT MAN

141062 | 36-38

POPLIN LADY

141051 | 34-46

Dressy shirt in a Poplin fabric with elements of stretch whose properties give a supple and soft feel. Turn down collar. Comfort and Slim fit for men. The women's model is slightly curved

Material: 97% organic Fairtrade cotton, 3% spandex



TWILL SLIM FIT MAN

141048 | 36-38

TWILL COMFORT MAN

141038 | 36-38

TWILL LADY

141037 | 34-46

Cotton shirt in a fine twill fabric with a light peach finish that gives a soft and smooth feeling. Cut away collar on men and turn down on lady. Men in Slim fit and Comfort, lady with two darts in the back, to give a tailored silhouette.

Material: 100% organic Fairtrade cotton



Applies on all items on this page:

Care: Certifications:



COTTOVER®

APRONS

Practicality and professionalism in one garment. The apron signals readiness to attend to your needs, to serve. And they are extremely good carriers of printed or embroidered messages, be it a supplier's trademark, your own logo or simply the individual name. With a visible Fairtrade logo tag, it also signals awareness.

WAIST APRON SHORT
141045 | One Size

Short waist apron with tie band. Front pocket divided in the middle. Decoration stitching tone in tone on twill, denim apron has yellow stitching.

Measurements: 85x50 cm
Material: 100% organic Fairtrade cotton
Weight: Twill 210 g/m² (665, 990),
Denim 10,5 oz (840)



WAIST APRON LONG
141047 | One Size

Long waist apron with tie. Front pocket divided in the middle. Long slit at centre front for comfort. Decoration stitching tone in tone on twill, denim apron has yellow stitching.

Measurements: 90x88 cm (ribbon 90 cm)
Material: 100% organic Fairtrade cotton
Weight: Twill 210 g/m² (665, 990),
Denim 10,5 oz (840)



COMBI APRON
141049 | One Size

Apron with dual function. Front pocket divided in the middle and tie in waist. Use as a bib apron with adjustable neck strap or as a waist apron. Bib can be folded down and hidden. Decoration stitching tone in tone on twill, denim apron has yellow stitching.

Measurements: 90x81 cm alt. 90x52 cm (ribbon 90 cm)
Material: 100% organic Fairtrade cotton
Weight: Twill 210 g/m² (665, 990),
Denim 10,5 oz (840)



Applies on all items on this page:

Care:

Certifications:

STANDARD 100
www.oeko-tex.com
CERES-0201



CERTIFIED CUISINE CLOTHING



CERTIFIED CARRIERS

COTTOVER® BAGS

We always need to bring stuff with us. To work, from school, The toothbrush, the computer, groceries. Necessities or just good-to-have stuff. Cottover has a small collection of the most essential carriers, plain and affordable, perfect for big print. And if not branded, the Fairtrade tag sends it own clear message.



CANVAS DAYPACK
141039 | One Size

Canvas backpack with visible front pocket. YKK zippers. Bronze colored details in metal with an antique finish. Inner pocket. Heavy adjustable carrying straps and handles. Black lining on both colors.

Measurements: 28x12x38 cm, 13 l
Material: 100% organic Fairtrade cotton
Weight: 310 g/m²



CANVAS TOILET CASE
141041 | One Size

Small toiletry bag, one large compartment and two inside pockets. Bronze colored YKK zipper in metal with an antique finish. Black lining on both colors.

Measurements: 16x10x17 cm
Material: 100% organic Fairtrade cotton
Weight: 310 g/m²



CANVAS DUFFLEBAG
141034 | One Size

Canvas bag with rounded sides. Heavy detachable and adjustable shoulder strap. Visible front pocket. YKK zippers. Bronze colored details in metal with an antique finish. Inner pocket. Black lining on both colors.

Measurements: 50 cm, ø 26 cm, 25 l
Material: 100% organic Fairtrade cotton
Weight: 310 g/m²



CANVAS COMPUTER CASE
141040 | 13"

Padded computer case suitable for laptop up to 13". Bronze colored YKK zipper in metal with an antique finish. Black lining on both colors. Strong carrying handles.

Measurements: 36x2.5x27 cm
Material: 100% organic Fairtrade cotton
Weight: 310 g/m²

Applies on all items on this page:





TOTE BAG
141028 | One Size

Canvas bag with long handles.
Measurements: 38x40 cm
Material: 100% organic Fairtrade cotton
Weight: 150 g/m²



TOTE BAG
HEAVY LARGE
141029 | One Size

Canvas bag with bellows and short handles.
Measurements: 38x8x40 cm
Material: 100% organic Fairtrade cotton
Weight: 290 g/m²



Applies on all items on this page:
Care:



TOTE BAG
HEAVY SMALL
141030 | One Size

Small canvas bag with bellows and short handles.
Measurements: 24x15x20 cm
Material: 100% organic Fairtrade cotton
Weight: 290 g/m²



GYM BAG
141033 | One Size

Gymbag in smooth canvas, drawstring on top with nature colored cords. Can also be used as a backpack.
Measurements: 38x45 cm
Material: 100% organic Fairtrade cotton
Weight: 150 g/m²



NEW!
KEY TOTE BAG
141043 | One Size

Canvas bag with long handles (72 cm).
Measurements: 39x7x40 cm
Material: 100% organic Fairtrade cotton
Weight: 150 g/m²



Applies on all items on this page:
Care:



COTTOVER® COMPLIANCE



FAIRTRADE

We could go on and on about Fairtrade. It's that amazing, and we're delighted about the fact that Cottover is able to contribute. In short, Fairtrade is an international certification of raw materials grown in countries with widespread poverty. The certification means that the product is produced in accordance with high social, economic, and environmental standards. But Fairtrade is so much more, always protecting the people behind the products.

Approximately one quarter of the world's working population is employed in agriculture, and it's in this category that Fairtrade has its focus. Behind the products we consume on a daily basis there are people who grow and produce goods such as coffee, bananas, wine and the cotton in the clothes we wear. Different criteria have been developed for farmers in cooperatives, employees on plantations, and for different raw materials. All criteria focus on humans.

Fair conditions for all

All human beings have the right to fair conditions at work and in life. You, me and everyone else. An important part of Fairtrade's work is to ensure that both farmers and employees can lift themselves out of poverty, and thereby improve their working and living conditions. Helping people to help themselves.

By bringing farmers together in Fairtrade-certified cooperatives so that they can sell their cotton collectively, they gain access to a larger international market with the potential for increased sales. They also receive a minimum price for the raw material, which acts as a safety net for the farmer when the world market price is low.

Today, millions of children work instead of going to school, because their parents' income is simply not enough to support their families. At the same time, we know that education is one of the most important factors in reducing poverty. With higher incomes, children can actually go to school.

The sale of the raw material also generates a premium for the farmers, which is often used to build schools. The premium can also be used for business investments or community development projects, such as health care, education, improved infrastructure and conversion to organic farming.

The tough cotton industry

The industry for cotton farmers is tough and millions of small-scale farmers in countries with widespread poverty depend on cotton for their livelihood.

The cotton flower grows on shrubs that thrive in dry climates, where there is a natural shortage of water, creating a catch 22 situation, as conventional cotton

cultivation usually requires large amounts of water. In addition to water, large amounts of pesticides and fertilizers are required. As you can see, conventionally grown cotton wears hard on both people and the environment.

Cotton prices have fallen sharply on the world market in recent decades, and today the price of cotton is a third of what it was in 1980. As a result, farmers and workers are less able to support themselves and their families. But Fairtrade is making a difference, through the minimum prices and premiums we described earlier, among other things. The Fairtrade premium can be used to advantage to invest in drip irrigation, which can save up to 30-70% of the water consumption.

Primarily, Fairtrade certified cotton is produced in India, where Cottover's cotton comes from. Individual farmers cannot become Fairtrade certified, only cooperatives, and the cotton is usually grown in small family farms. In addition to the minimum price and premium, Fairtrade also has clear rules on the handling of chemicals and requires health promotion measures for everyone in the cooperative. Fairtrade criteria also encourage long-term trading relationships that secure sales, and therefore income, over time.

For people and the environment

Is Fairtrade and organic the same thing? No, it is not, although they are often interlinked. Fairtrade's main focus is poverty alleviation and working conditions - which means the people behind the product. Several environmental requirements must also be met, such as water efficiency and a ban on genetically modified organisms (GMOs). Growing organically focuses on the environment, but is often better for the farmer as well, as it means less use of chemical pesticides.

A majority of Fairtrade-certified cotton farmers are also organically certified. The uniqueness of Fairtrade certification is that it ensures that farmers are actually paid better, which organic certification does not guarantee. Dual certification - Fairtrade and organic - covers both aspects. All the cotton in Cottover's collection is certified under both Fairtrade and GOTS, which means that it's organic.

Choose Fairtrade and make a difference

If you ask yourself why you, as a consumer, should choose to buy Fairtrade, the answer is that it's a simple way for you to make a difference to another human being. By choosing Fairtrade-labelled products, you help to improve the working and living conditions of those who grow and produce the goods you consume daily. In addition, you contribute to more children having the opportunity to go to school instead of being forced to work. If you ask us, that sounds like a good thing for the future.

GLOBAL ORGANIC TEXTILE STANDARD – GOTS

There are several certifications worth remembering, and especially worth bearing in mind when consuming. GOTS (Global Organic Textile Standard) is one of them. GOTS is recognised as the world's leading processing standard for textiles made from certified organically produced raw materials. Conventional textile processing often results in the release of toxic chemicals into the environment, and textile processing often poses significant risks for those working in production. We all live on the same planet, we share the same water and air, and we need to look after each other. Not least the people who actually produce the textiles we consume. That's why we've made the choice to GOTS-certify our Cottover collection. The fact that our decision facilitates conscious choices is merely a bonus.

What are organic raw materials?

The organic nature of a natural raw material such as cotton means that it's been produced and certified according to specific organic farming standards. Organic cotton means that it is grown without any chemical pesticides or artificial fertilizers that can be harmful to people and the environment. GOTS requires that at least 70% of the products contain certified organic raw materials. Up to 30% may be other raw materials, but these must also meet the specific requirements. For example, in some Cottover products we use recycled polyester to make the material stronger. GOTS has two levels of labelling where

"Organic" means more than 95% organic raw materials, and "Made with Organic" more than 70%. The Cottover collection includes products with both labels.

Products without toxic chemicals

In addition to the cotton being organically grown without toxic pesticides, GOTS requires products to be produced without toxic or harmful chemicals. Such chemicals can, for example, be suspected hormone disruptors or disrupt ecosystems and biodiversity. That's not something we wish to be a part of. Through GOTS, we know that dyes and other additives are assessed against strict criteria before they are approved for use. There are also requirements for the chemical content of the final product. GOTS protects both people and the environment, which is in line with our values. It is for the sake of people and the environment that we all need to choose certified products.

Full traceability and social requirements

GOTS-certified products always use organic cotton and recycled polyester. Through its high demands on materials, quality, environmental and social aspects for all parties involved in production, you can feel assured that GOTS-labelled products are a good choice. In addition, full traceability is guaranteed throughout the supply chain. Do we need to point out that we are proud to be a part of GOTS...?

STANDARD 100 by OEKO-TEX®

We are proud of the fact that the entire Cottover collection is certified with STANDARD 100 by OEKO-TEX®. It's easy to name drop certifications here and there, but they are important in what they represent and we would like to explain what OEKO-TEX® really means, so that you can gain knowledge and make conscious choices.

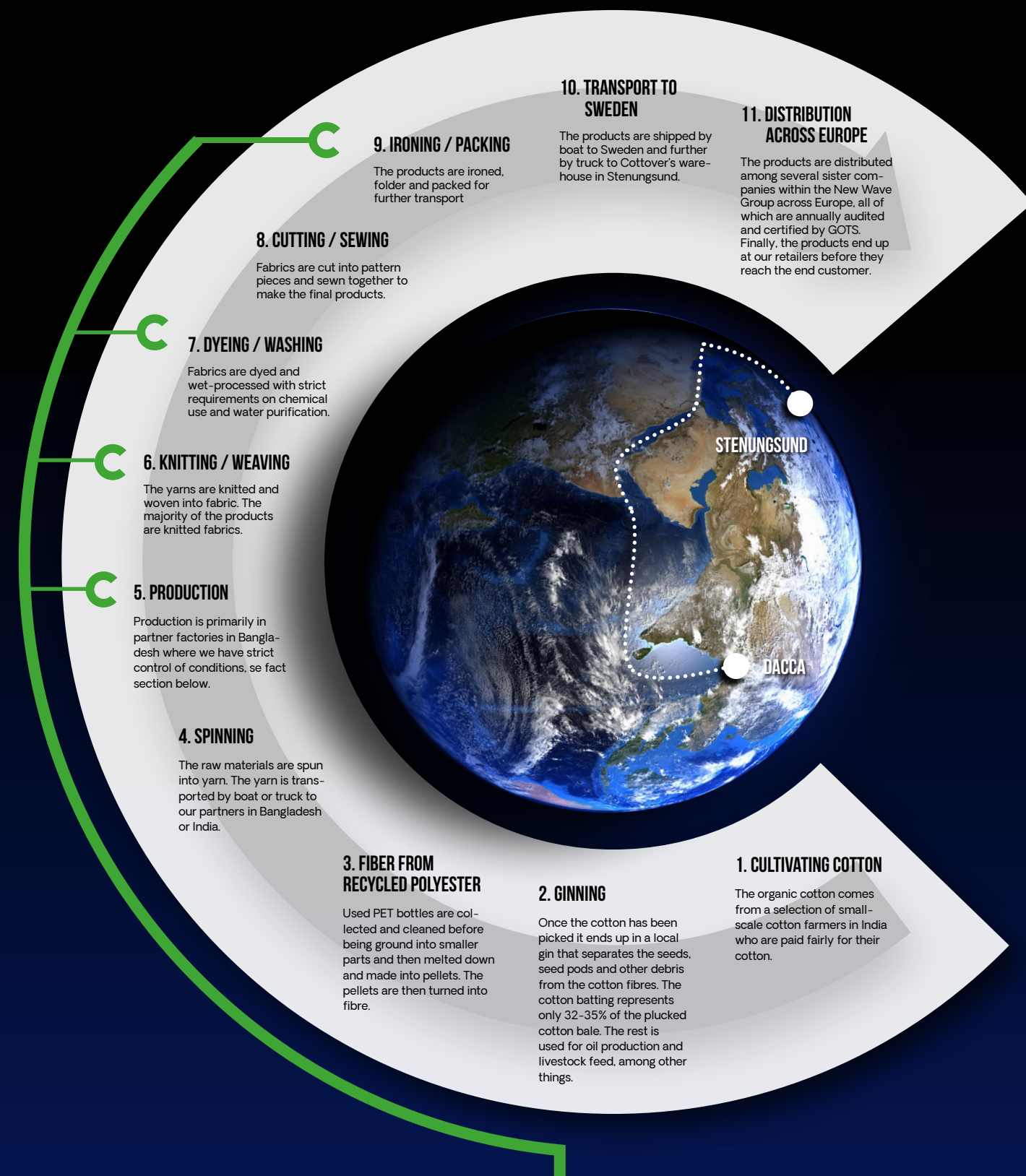
OEKO-TEX® is the world's most well-known and independent label for textiles that have been tested for harmful chemicals. The certification enables us as a company, as well as you as a consumer, to make responsible decisions that protect our planet for the future. OEKO-TEX® takes into account regulated substances such as azo dyes, formaldehyde and nickel, as well as chemicals that

have not yet been regulated by law. Testing is carried out only by authorized and independent laboratories affiliated with the OEKO-TEX® Association. The testing and certification process that OEKO-TEX® standards are based on, ensures maximum consumer safety.

In the industry, the certification is considered a guarantee for products complying with the EU chemicals legislation REACH at the very least.

OEKO-TEX® makes sustainability easy and through our certification, we want to make sustainable choices easy for you.

COTTOVER CLOCKWISE



CONTROL

New Wave Group has its own purchasing office with nearly fifty employees. Our own staff is present at the factory to ensure that set requirements are complied with in terms of quality as well as social and environmental aspects, and that there's a flow through all stages of production.

In addition to internal controls, the factory regularly undergoes independent social audits within the framework of the Amfori BSCI. New Wave Group is also a signatory to the International Accord, which means that the factory, among other things, undergoes electrical and building inspections as well as training and education in fire safety.

Quality control

The factories undergo quality controls as part of ensuring that they maintain a high standard and that all requirements are met. Quality checks are carried out several times in the chain.

COLLABORATIONS



amfori @ BSCI
Trade with purpose

BSCI is an initiative for businesses that want to improve working conditions in the global supply chain. Their code of conduct is making demands on all members' suppliers, for example regarding wages and the prohibition of child labour, forced labour, and discrimination.

TextileExchange

Textile Exchange is an international organisation working for a responsible expansion of organic cotton farming. Today, the available supply of organic cotton is not enough to meet the rising demand.

ACCORD
on Fire and Building Safety in Bangladesh

The Accord is a five-year contract to improve safety in the Bangladeshi textile industry, focusing on building, electrical, and fire safety. Over two million textile workers are directly affected by the work of Accord, which is, therefore, one of our most important projects regarding social responsibilities.



The Clean Shipping Index is an initiative aimed at encouraging shipping companies to use cleaner ships that are more environmentally friendly, in order to reduce chemical and greenhouse gas emissions into our oceans.

ff **mistra future fashion**

Mistra Future Fashion is a research programme focusing on sustainable fashion and working for a positive future for the fashion industry. The programme has a unique system perspective, and the vision and aim of the programme is to ensure a systemic change to transform the industry into a sustainable one. Their interdisciplinary approach consists of research in areas such as design, supply chains, users, and recycling, in collaboration with a large consortium of more than 40 research and industry partners, including Cottover. Visit www.mistrafuturefashion.com

WHAT YOU

IS WHAT YOU GET

**COTTOVER
CONSCIOUS
COMMERCIAL
COMFORTABLE
CONTEMPORARY
CONSEQUENT
COMBINABLE
COLORFUL
CASUAL
COMMITTED
COTTON
COLLECTION
CERTIFIED
COMPLIANT
CHOICE
CORE
COOL**

So many added values, and yet we have limited ourselves to only one initial letter in one language: C. As in Cottover and in Certified. Those are the two words you need to remember. The rest are just descriptive.

The Cottover concept is now in its 10th year and all the time we have committed ourselves to work in full compliance with the major organisations for fair production in textiles: GOTS, Fairtrade and Oeko-Tex. And with a number of other initiatives as well. We describe these collaborations in overview inside this catalogue.

As the European Union is taking more and more steps to prevent greenwashing, we confidently sit back and enjoy the fact that from Cottover, what you see is what you get.

Hopefully you see a lot. Have a great 2025!

cottover[®]

COTTOVER[®] IS A REGISTERED TRADE MARK BY NEW WAVE GROUP AB (PUBL)