



BLACK BOW 60 REGULAR FIT



CATALOG NUMBER

2906001

CATEGORY

SHIRTS

CATEGORY

MEN'S

DESCRIPTION:

Black bow is our new and most inovative multifunction shirt.

We created a modern multifunction shirt using only the finest luxurious cotton. It took us over years of testing, failing and progressing. It is challenging combining all functions at this high-end quality fabric level.

DETAILS.

- BLACK BOW LINE.
- NEVER IRON.
- NANO TECHNOLOGY. WATER, OIL AND STAIN REPELLENT.
- SOLID COLOR. 100% LONG STAPLE COMPACT COTTON WITH MECHANICAL STRETCH. MACHINE WASHABLE. **It is a technical garment, treated with nanotechnology to be resistant to water/liquid you should NOT use SOFTENER when washing.**
- SPLIT BACK YOKE ENSURES SMOOTH CONTOURED SHOUL-DERS AND A GREATER RANGE OF MOTION.
- TAPED MAIN-SEAMS HELP THE SHIRT LOOK SHARP, WASH AFTER WASH. NO WRINKLES.
- MODERN CUT-AWAY COLLAR.
- ELASTIC TOP BUTTON THREAD.
- LONG SLEEVE. ROUND EDGE -CUFF, WITH EXTRA BUTTON-HOLE FOR CUFF LINKS.
- CURVED HEM.

PARAMETERS:



100% Cotton



131 g/m²

AVAILABLE COLORS



WHITE



SKY
BLUE



BLACK

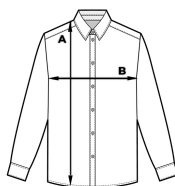
PACKING:  20  1

MARKING METHOD

Embroidery

Patches

WASHING



| SIZE | S | M | L | XL | XXL | 3XL | 4XL | 5XL |
|------|-------|---------|-------|---------|-------|-------|-------|-------|
| A/B | 79/53 | 80,5/56 | 82/59 | 83,5/62 | 84/65 | 86/69 | 88/73 | 90/77 |

Sizes in cm