



**J. HARVEST & FROST**  
CORPORATE SHIRTMAKER



2026



**J. HARVEST & FROST**  
CORPORATE SHIRTMAKER

## J. HARVEST & FROST

At J. Harvest & Frost, our mission is simple: we aim to bring passion, style, and functionality into your workday. We believe that quality design, fine aesthetics, and precision craftsmanship are essential to thriving in work and life, and we all need surroundings that inspire us.

## WE ARE SHIRTMAKERS

Our core collection offers meticulously crafted, high-quality shirts that are both affordable and exceptionally made. We aim to add that intangible element of style that enhances each day. Founded in 2014 through a collaboration between James Harvest Sportswear—rooted in collegiate fashion—and Frost, known for tailored, finely cut garments, we brought two traditions together to create something truly unique.

From the start, we've been on a journey to design shirts that meet the demands of any moment, whether at the office or out for the evening. Quality, durability, and timeless style are our guiding principles. Inspired by early 20th-century fashion and classic designers, we are committed to making garments we would proudly wear ourselves.

## ALWAYS EVOLVING

As people's needs evolve, so does our pursuit of the perfect shirt. We continuously refine every stitch, fabric, and detail because, to us, great design is the sum of impeccable craftsmanship, premium materials, and a whole lot of heart. Alongside beauty and function, sustainability is key to our vision; we're integrating organic cotton, recycled materials, and bio-based packaging to ensure our shirts look good and do no harm.

So, keep working toward your goals with passion.

We'll make sure you're always dressed for the occasion.





## CLASSIC COLLECTION

6

### SOLID CLASSICS

|                    |    |
|--------------------|----|
| BB60 TWILL         | 8  |
| GB01 TWILL         | 12 |
| GB02 TWILL STRETCH | 14 |
| YB50 TWILL         | 16 |
| YB50 S/S TWILL     | 18 |
| YB50 POCKET        | 19 |
| CREPE SATIN BLOUSE | 21 |

### CLASSICS WITH A TWIST

|                   |    |
|-------------------|----|
| RB20 TWILL        | 22 |
| RB120 TWILL       | 23 |
| RB122 TWILL       | 26 |
| RB123 ROYAL TWILL | 27 |
| YB51 TWILL        | 32 |
| RB121 OXFORD      | 33 |
| YB56 TWILL        | 35 |
| YB55 JACQUARD     | 36 |

|                        |    |
|------------------------|----|
| PB49 JACQUARD          | 37 |
| PB142 OXFORD           | 40 |
| PB146 BEDFORD          | 41 |
| PB143 TWILL            | 42 |
| PB144 BRUSHED JACQUARD | 43 |

### SIGNATURE SUIT

|                        |    |
|------------------------|----|
| SIGNATURE SUIT VEST    | 46 |
| SIGNATURE SUIT BLAZER  | 47 |
| SIGNATURE SUIT SKIRT   | 48 |
| SIGNATURE SUIT TROUSER | 49 |

### ACCESSORIES

|                                  |    |
|----------------------------------|----|
| GIFTBOX SOLID SCARF              | 53 |
| GIFTBOX SOLID HANKIE & LABEL PIN | 53 |
| GIFTBOX SOLID PAISLEY TIE        | 53 |



## COMFY COLLECTION

40

### CASUAL & KNITTED SHIRTS

|                          |    |
|--------------------------|----|
| YB57 KING KNIT           | 61 |
| IB132 S/S INTERLOCK KNIT | 64 |
| IB132 INTERLOCK KNIT     | 65 |
| IB131 PIQUE KNIT         | 66 |
| IB135 PIQUE KNIT         | 69 |
| PB147 SUPER STRETCH      | 71 |
| YB54 OXFORD              | 73 |

### BLAZER, TROUSERS, OVERSHIRTS

|                               |    |
|-------------------------------|----|
| MODERN ZIP OVERSHIRT          | 76 |
| PATCH POCKET OVERSHIRT UNISEX | 79 |
| MODERN TROUSER                | 81 |
| CASUAL BLAZER                 | 82 |

### SWEATERS

|          |    |
|----------|----|
| MERINO V | 90 |
| MERINO U | 91 |

### COAT

|              |    |
|--------------|----|
| THE CAR COAT | 93 |
|--------------|----|

### SALE

|                           |    |
|---------------------------|----|
| IB33 LINEN                | 96 |
| IB37                      | 96 |
| PB48 JACQUARD             | 96 |
| IB34 PIQUE KNIT           | 96 |
| IB131 PIQUE KNIT          | 97 |
| CLASSIC BLAZER 20         | 97 |
| IB133 POLO S/S PIQUE KNIT | 97 |
| IB133 S/S PIQUE KNIT      | 97 |
| CLASSIC TROUSER           | 97 |

|            |    |
|------------|----|
| SIZE GUIDE | 99 |
|------------|----|



# THE SHIRT CATEGORIES

TO MAKE IT EASIER FOR YOU TO FIND THE PERFECT SHIRT, WE HAVE STRUCTURED OUR RANGE INTO THREE MAIN CATEGORIES.



## SOLID CLASSICS

---

CLASSIC BUSINESS SHIRTS WITH TIMELESS STYLE AND IMPECCABLE FIT — DESIGNED FOR A SHARP, PROFESSIONAL LOOK EVERY DAY.

---

GB01      BB60  
GB02      YB50

## CLASSICS WITH A TWIST

---

NON-IRON BUSINESS CLASSICS WITH A MODERN TWIST IN DESIGN AND DETAIL. PERFECT FOR THOSE WHO WANT ELEGANCE WITH A HINT OF PERSONALITY.

---

RB20      YB56  
RB120      PB49  
RB121      PB142  
RB122      PB143  
RB123      PB144  
YB51      PB146  
YB55

## CASUAL & KNITTED

---

CASUAL SHIRTS ARE 3 CM SHORTER IN BODY LENGTH FOR A RELAXED LOOK. KNITTED SHIRTS COMBINE THE ELEGANCE OF A DRESS SHIRT WITH THE COMFORT OF A T-SHIRT.

---

YB57      PB147  
IB132      YB54  
IB135



# CLASSIC COLLECTION

Discover timeless style and unmatched quality with the J. Harvest & Frost Classic Collection. Crafted with precision and designed to elevate every workday, these shirts combine classic elegance with modern functionality, offering comfort, durability, and style that lasts.

Step into a new level of professionalism and confidence with our Classic Collection—shirts made to impress, crafted to endure.



100  
WHITE



500  
SKY BLUE



900  
BLACK

NEVER-IRON



WRINKLE  
RESIST 6/6



STRETCH  
2/6



WEIGHT  
131 G/M<sup>2</sup>



NEVER-IRON



WATER, OIL  
AND STAIN  
REPELLENT



STANDARD  
100  
SE 23-303  
RHE


**BB60 Twill**

REGULAR ♂ 2906001 S-5XL    SLIM ♂ 2906002 XS-XXL    WOMAN ♀ 2906003 XS-4XL

The ultimate iron free shirt with revolutionary spill protection, and probably the last great shirt you'll ever need. Say goodbye to ironing, untimely coffee spills and business lunch stains. Thanks to advanced nanotex technology, the Black Bow has your back. Black Bow is set out to be the world's best working shirt.

100% LONG STAPLE COMPACT COTTON, 131 G/M<sup>2</sup> WITH MECHANICAL STRETCH. MACHINE WASHABLE (NO FABRIC SOFTENER), NEVER IRON. NANO TECHNOLOGY. WATER, OIL AND STAIN REPELLENT. TAPED MAIN-SEAMS. ELASTIC TOP BUTTON THREAD. LONG SLEEVE. ROUND EDGE CUFF. EXTRA BUTTONHOLE FOR CUFF LINKS.





WE'RE CONSTANTLY EXPLORING NEW FABRICS AND TECHNOLOGIES TO CREATE SHIRTS THAT REDEFINE COMFORT AND PERFORMANCE. FROM OUR ANTI-SPILL TECHNOLOGY TO INNOVATIVE KNIT STRUCTURES LIKE JERSEY AND PIQUÉ FOR EXCEPTIONAL FLEXIBILITY, EVERY DETAIL IS CAREFULLY CONSIDERED. WE INCORPORATE AS MUCH RECYCLED MATERIAL AS POSSIBLE AND HAVE REDUCED PLASTIC USE IN PACKAGING TO A BARE MINIMUM. WITH NON-IRON AND EASY-CARE PROPERTIES, WE CONTINUE TO PUSH THE BOUNDARIES OF MODERN SHIRTING—WHERE STYLE AND FUNCTIONALITY ALWAYS GO HAND IN HAND.





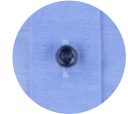
NON-IRON



100  
WHITE



500  
SKY BLUE



560  
MID BLUE



600  
NAVY



900  
BLACK



911  
GREY



WRINKLE  
RESIST 6/6



STRETCH  
0/6



WEIGHT  
124 G/M<sup>2</sup>



NON-IRON



STANDARD  
100  
SE 23-303  
RBE

**GB01 Twill**

REGULAR ♂ 2900101 S-5XL

SLIM ♂ 2900102 XS-XXL

WOMAN ♀ 2900103 XS-4XL

WOMAN RELAXED \* ♀ 2900104 XS-4XL

Nothing beats the clean look of a solid dress shirt.  
But even at a solid color there are still some features that make our shirt stand out from the crowd. The shirt is crafted in our favorite high performance twill texture. This gives the perfect sheen to it, results in a substantial good hand feeling and makes it less transparent than similar white dress shirts.  
A split yoke in back, medium cut-away collar and a 35 mm. raised placket set the edge for this sharp, but classic shirt.

SOLID COLORS. 100% LONG STAPLE 2-PLY COMPACT COTTON, 124 G/M<sup>2</sup>. NON-IRON PATENTED ENVIRONMENTAL TREATMENT. TAPED MAIN-SEAMS. 4 MM-THICK BUTTONS. LONG SLEEVE. SINGLE ANGLE CUFF, WITH EXTRA BUTTONHOLE FOR CUFFLINKS.

WOMAN RELAXED IS ONLY AVAILABLE IN COLOURS 100 AND 500.



NEW STYLE  
NON-IRON



100  
WHITE



500  
SKY BLUE



600  
NAVY



900  
BLACK



WRINKLE  
RESIST 6/6



STRETCH  
4/6



WEIGHT  
126 G/M<sup>2</sup>



NON-IRON



STANDARD  
100  
SE 23-303  
RBE

**GB02 Twill Stretch**

REGULAR ♂ 2900201 S-5XL

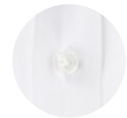
SLIM ♂ 2900202 XS-XXL

WOMAN CONTEMPORARY ♀ 2900205 XS-5XL

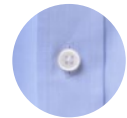
Nothing beats the clean look of a solid dress shirt. This one also has features that makes it stand out from the crowd, such as the rare combination of Non-Iron performance and stretch effect. The high performance twill texture also gives the perfect sheen to the shirt, and a nice handfeel. It has a split yoke in the back and a soft hidden button down cut-away collar that stays in place at all times.

80% COTTON 16% LYOCCELL 4% ELASTANE





100  
WHITE



500  
SKY BLUE



600  
NAVY



900  
BLACK



955  
GREY



501  
SKY BLUE/STRIPE



601  
NAVY/STRIPE

EASY CARE



**YB50 TWILL**

REGULAR ♂ 2905001 S-5XL SLIM ♂ 2905002 XS-XXL  
EXTRA L/S REGULAR ♂ 2905041 S-4XL EXTRA L/S SLIM ♂ 2905042 XS-XXL  
WOMAN ♀ 2905003 XS-4XL WOMAN CONTEMPORARY ♀ 2905005 XS-4XL

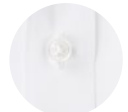
YB50 Twill is a high performance shirt made in our favorite fine blended twill with an added unique Easy Care treatment. As always with taped seams and split yoke. (Extra Long Sleeve & W Contemporary only in colors 100 and 500)

60% ORGANIC COTTON (WHITE: 60% COTTON) / 40% RECYCLED POLYESTER FINE TWILL FABRIC, 135 G/M<sup>2</sup>. EASY CARE TREATMENT. TAPED MAIN-SEAMS. LONG SLEEVE/ SHORT SLEEVE OPTION. TALL, 4 MM-THICK BUTTONS.

\* IN ORDER TO ACHIEVE THE CRISP WHITE COLOR, COLOR 100 IS NOT MADE FROM ORGANIC COTTON

EXTRA LONG SLEEVE & WOMAN CONTEMPORARY IS ONLY AVAILABLE IN COLOURS 100 AND 500.





100  
WHITE



500  
SKY BLUE



600  
NAVY



900  
BLACK



955  
GREY

EASY CARE



**YB50 Twill S/S**

SHORT SLEEVE REGULAR ♂ 2905011 S-5XL

SHORT SLEEVE SLIM ♂ 2905022 XS-XXL

YB50 Twill S/S is a high performance shirt made in our favorite fine blended twill with an added unique Easy Care treatment. As always with taped seams and split yoke.

60% ORGANIC COTTON (WHITE: 60% COTTON) / 40% RECYCLED POLYESTER FINE TWILL FABRIC, 135 G/M<sup>2</sup>. EASY CARE TREATMENT. TAPED MAIN-SEAMS. LONG SLEEVE/ SHORT SLEEVE OPTION. TALL, 4 MM-THICK BUTTONS.

IN ORDER TO ACHIEVE THE CRISP WHITE COLOR, COLOR 100 IS NOT MADE FROM ORGANIC COTTON



100  
WHITE



500  
SKY BLUE



EASY CARE



WRINKLE  
RESIST 4/6



STRETCH  
0/6



WEIGHT  
134 G/M<sup>2</sup>



ORGANIC  
COTTON



RECYCLED  
MATERIALS



EASY CARE



**YB50 Twill Pocket**

REGULAR ♂ 2905031 S-5XL

SLIM ♂ 2905032 XS-XXL

YB50 Twill Pocket is a high performance shirt made in our favorite fine blended twill with an added unique Easy Care treatment. As always with taped seams and split yoke.

60% ORGANIC COTTON (WHITE: 60% COTTON) / 40% RECYCLED POLYESTER FINE TWILL FABRIC, 135 G/M<sup>2</sup>. EASY CARE TREATMENT. TAPED MAIN-SEAMS. LONG SLEEVE/ SHORT SLEEVE OPTION. TALL, 4 MM-THICK BUTTONS. SINGLE ANGEL-CUFF WITH CUFFLINK HOLE.

IN ORDER TO ACHIEVE THE CRISP WHITE COLOR, COLOR 100 IS NOT MADE FROM ORGANIC COTTON





100  
WHITE



900  
BLACK



NEW STYLE

EASY CARE  
LIGHTWEIGHT FABRIC



WRINKLE  
RESIST 4/6



STRETCH  
0/6



WEIGHT  
134 G/M<sup>2</sup>



RECYCLED  
MATERIALS



EASY CARE



STANDARD  
100  
SE 23-204  
RISE

**Crepe Satin Blouse**

WOMAN ♀ 2950003 XS-4XL

A blouse made from a light and soft satin fabric with a beautiful drape, crafted from recycled material. A stylish alternative to a shirt. The blouse features a shirt collar, cuffs, and a loose fit. The white version is not transparent.

100% RECYCLED POLYESTER



NON-IRON



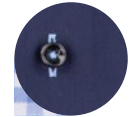
1066  
WHITE/NAVY



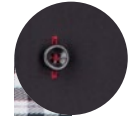
109  
WHITE/BLACK



5066  
SKY BLUE/NAVY



605  
NAVY/SKY BLUE



904  
BLACK/RED



WRINKLE  
RESIST 6/6



STRETCH  
0/6



WEIGHT  
124 G/M<sup>2</sup>



NON-IRON



STANDARD  
100  
SE 23-203  
RISE

**RB20 Twill**

REGULAR ♂ 2902001 S-4XL

SLIM ♂ 2902002 XS-XXL

WOMAN ♀ 2902003 XS-4XL

In RB20 Twill, we reinvent the classic shirt. By adding sophisticated colors and details we made it more modern and smart, but still kept it a classy business shirt. The shirt is crafted in our favorite high performance twill texture. This gives the perfect sheen to it, results in a substantial good hand feeling and makes it less transparent than similar dress shirts.

100% LONG STAPLE 2-PLY COMPACT COTTON, 124 G/M<sup>2</sup>, MACHINE WASHABLE. NON-IRON. TAPED MAIN-SEAMS. LONG SLEEVE. SINGLE ANGEL-CUFF, WITH EXTRA BUTTONHOLE FOR CUFFLINKS. 4 MM-THICK BUTTONS.



550  
INDIGO



NON-IRON



WRINKLE  
RESIST 6/6



STRETCH  
0/6



WEIGHT  
124 G/M<sup>2</sup>



NON-IRON

**RB 120 Twill**

REGULAR ♂ 2912001 S-4XL

SLIM ♂ 2912002 XS-XXL

WOMAN ♀ 2912003 XS-4XL

The perfect shirt for any occasion. With the characteristic indigo color, our famous non-iron fine twill fabric can remind you of a smart "jeans shirt". It is set up with a tone in tone paisley contrast pattern in collar & cuff, and white details in placket & button tread.

The typical Redbow line-shirt. Classical, yet detailed, giving the shirt a modern sophisticated look.

100% TWILL COTTON, LONG STAPLE 2-PLY COMPACT COTTON. NON-IRON PATENTED ENVIRONMENTAL TREATMENT. TAPED MAIN-SEAMS. LONG SLEEVE. SINGLE ANGEL-CUFF, WITH EXTRA BUTTONHOLE FOR CUFFLINKS. 4 MM-THICK BUTTONS.




# We are serious about our Non-Iron...

AT J.HARVEST & FROST WE TAKE GREAT PRIDE IN MAKING THE FINER WEAR WORK.

TO VISUALIZE THE APPEARANCE OF THE SHIRT BETTER FOR EACH MODEL, WE CREATED A 6/6 GRADING SYSTEM. OUR SYSTEM IS BASED ON THE APPEARANCE SYSTEM THAT WELL KNOWN TESTING CENTERS LIKE SGS ARE USING. THEIR SYSTEM HOWEVER HAS 5 GRADES WHERE NO. 5 IS THE HOLY GRAIL OF NON-IRON. UNATTAINABLE WITH THE CURRENT TECHNOLOGY WITHOUT STEAM IRONING THE SHIRT.

IT IS THE BRIGHT, SHINING PRIZE WORTH STRIVING FOR. WE ARE CLOSE BUT WE'LL LET YOU KNOW WHEN WE REACH IT.

|   |   |   |   |  |   |   |                     |
|---|---|---|---|--|---|---|---------------------|
|  |  |  |  |  |  |  |                     |
|  |  |  |  |   |  |  |                     |
| WRINKLE RESIST 0/6  | WRINKLE RESIST 1/6  | WRINKLE RESIST 2/6  | WRINKLE RESIST 3/6  | WRINKLE RESIST 4/6   | WRINKLE RESIST 5/6  | WRINKLE RESIST 6/6  |                     |
| CRUMPLED, CREASED AND SEVERELY WRINKLED APPEARANCE.                               | CRUMPLED, OBVIOUSLY WRINKLED APPEARANCE.  | FAIRLY LITTLE WRINKLES NON-PRESSED APPEARANCE.                                    | SMOOTH BUT NON PRESSED APPEARANCE.  | SMOOTH, FINISHED APPEARANCE.   | VERY SMOOTH, FINISHED APPEARANCE.   | PRESSED, SHARP FINISHED APPEARANCE.   | THE QUEST CONTINUES |

# ...and about our materials

WE CAN TALK FOR HOURS ABOUT THE DISTINCT DIFFERENCES BETWEEN A TRADITIONAL TWILL WEAVE AND ITS LESSER-KNOWN SIBLING, THE ROYAL TWILL WEAVE. THIS MIGHT MAKE US A BIT LONELY AT DINNER PARTIES, BUT IT MAKES US ABSOLUTELY AMAZING AT CONSTRUCTING THE MOST STYLISH AND FUNCTIONAL SHIRTS IMAGINABLE.



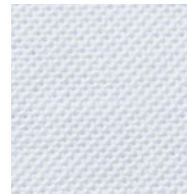
**TWILL WEAVE**  
A fabric characterized by a discreet diagonal rib pattern, offering durability and a soft drape, commonly used in shirts and trousers.



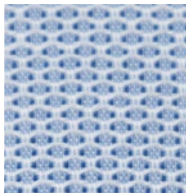
**ROYAL TWILL WEAVE**  
A refined version of the traditional twill, featuring a tighter weave more pronounced rib pattern and a subtle sheen, suitable for formal shirts.



**BEDFORD WEAVE**  
A durable fabric with a ribbed texture, similar to corduroy but with less pronounced ribs.



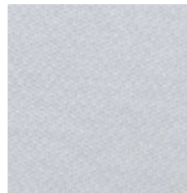
**OXFORD WEAVE**  
A basket weave fabric combining two yarns woven together, resulting in a slightly textured, soft, and breathable finish, ideal for both casual and formal shirts.



**JACQUARD WEAVE**  
A complex weaving technique that creates intricate patterns directly into the fabric, adding texture and visual interest without the need for pattern printing.



**PIQUÉ KNIT**  
A textured knit fabric with a raised pattern, often used in polo shirts, providing a subtle texture and breathability.



**INTERLOCK KNIT**  
A double-knit fabric with a smooth surface on both sides, offering a soft hand feel and good stretch, commonly used in t-shirts and underwear.



**KING KNIT**  
A specific type of knit fabric known for its luxurious feel and intricate patterns, often used in high-end garments



NON-IRON



100  
WHITE



500  
SKY BLUE



560  
MID BLUE



911  
GREY



WRINKLE  
RESIST 6/6



STRETCH  
0/6



WEIGHT  
124 G/M<sup>2</sup>



NON-IRON



STANDARD  
100  
SE 23-303  
RISE

**RB122 Twill**

REGULAR ♂ 2912201 S-4XL

SLIM ♂ 2912202 XS-XXL

WOMAN ♀ 2912203 XS-4XL

Many of our continuing shirts have had the time to turn into real classics. RB122 Twill is one of them. Infalible model with modern details and the popular hidden button-down collar which we love so much. It's in our top-selling quality, same quality as GB01 Twill and RB20 Twill.

OUR SIGNATURE FINE TWILL-WEAVE. 100% LONG STAPLE 2-PLY COMPACT COTTON. NON-IRON PATENTED ENVIRONMENTAL TREATMENT. TAPED MAIN-SEAMS. LONG SLEEVE. SINGLE-ANGLE CUFF, WITH EXTRA BUTTONHOLE FOR CUFFLINKS. 4 MM-THICK BUTTONS.



100  
WHITE



500  
SKYBLUE



998  
DARKGREY



NON-IRON



WRINKLE  
RESIST 6/6



STRETCH  
0/6



WEIGHT  
124 G/M<sup>2</sup>



NON-IRON



STANDARD  
100  
SE 23-303  
RIBE

**RB123 Royal Twill**

REGULAR ♂ 2912301 S-4XL

SLIM ♂ 2912302 XS-XXL

WOMAN CONTEMP ♀ 2912305 XS-4XL

This Non-Iron shirt is crafted in a high performance Royal Twill. The stylish twill-texture combined with the subtle details and the soft modern cut away collar with hidden button down makes it a perfect modern Business Classic with a twist.

100% COTTON.









# THE OXFORD WEAVE

THE OXFORD WEAVE IS ONE OF THE MOST ICONIC SHIRTING FABRICS OF ALL TIME. RECOGNIZABLE BY ITS SLIGHTLY HEAVIER STRUCTURE AND SUBTLE BASKET-LIKE TEXTURE, IT WAS ORIGINALLY DEVELOPED AT SCOTTISH MILLS IN THE 19TH CENTURY. DURABLE, VERSATILE, AND COMFORTABLE, IT QUICKLY BECAME THE FABRIC OF CHOICE FOR SHIRTS THAT COULD TRANSITION SEAMLESSLY FROM CAMPUS TO BOARDROOM.

UNLIKE SMOOTHER WEAVES SUCH AS POPLIN OR TWILL, OXFORD HAS A RELAXED ELEGANCE THAT FEELS BOTH SMART AND APPROACHABLE. THIS BALANCE BETWEEN FORMALITY AND EASE IS WHY THE CLASSIC OXFORD SHIRT BECAME A CORNERSTONE OF THE PREPPY STYLE, WORN BY STUDENTS, ATHLETES, AND PROFESSIONALS ALIKE.

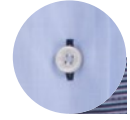
TODAY, THE OXFORD WEAVE REMAINS A TRUE ESSENTIAL. IT CONVEYS CONFIDENCE WITHOUT STIFFNESS, MAKING A STATEMENT THAT IS POLISHED YET EFFORTLESS. WHETHER PAIRED WITH A TIE UNDER A BLAZER OR WORN CASUALLY WITH ROLLED-UP SLEEVES, AN OXFORD SHIRT EMBODIES TIMELESS STYLE WITH AN EDGE OF AUTHORITY.



EASY CARE



105  
WHITE/SKY BLUE



505  
SKY BLUE/NAVY



905  
BLACK



955  
GREY/BLACK



WRINKLE  
RESIST 4/6



STRETCH  
0/6



WEIGHT  
134 G/M<sup>2</sup>



ORGANIC  
COTTON



RECYCLED  
MATERIALS



EASY CARE



STANDARD  
100  
SE 23-304  
RISE

**YB51 Twill**

REGULAR ♂ 2905101 S-5XL

SLIM ♂ 2905102 XS-XXL

WOMAN ♀ 2905103 XS-4XL

Yellow bow 51 is a high performance shirt is made in a fine blended twill with an added unique Easy Care treatment and tailored details. As always with taped seams and split yoke.

60% ORGANIC COTTON / 40% RECYCLED POLYESTER (WHITE 60% COTTON / 40% RECYCLED POLYESTER) FINE TWILL FABRIC. MACHINE WASHABLE. SPECIAL ENVIRONMENTAL EASYCARE TREATMENT. OEKOTEX 100 CERTIFIED.



100  
WHITE



500  
SKY BLUE



561  
BLUE



600  
NAVY



NON-IRON



WRINKLE  
RESIST 5/6



STRETCH  
4/6



WEIGHT  
149 G/M<sup>2</sup>



NON-IRON



### RB121 Oxford

REGULAR ♂ 2912101 S-4XL

SLIM ♂ 2912102 XS-XXL

WOMAN ♀ 2912103 XS-4XL

We might be one of very few brands that, at the present, can handle the combination NON IRON & STRETCH. It's a tricky combination, you see, which requires quite a lot of thinking, testing and developing to get all this performance into one single shirt. Luckily, we do enjoy the hard-work & developing. RB121 comes with stylish details, such as a passepoiled chest pocket and matching contrast colors at the right spots.

OXFORD WEAVE. 95% LONG STAPLE 2-PLY COMPACT COTTON, 5 % ELESTANE, 145 G/M<sup>2</sup>. NON-IRON PATENTED ENVIRONMENTAL TREATMENT. TAPED MAIN-SEAMS. BUTTON DOWN COLLAR. LONG SLEEVE. ROUND EDGE-CUFF, WITH EXTRA BUTTONHOLE FOR CUFFLINKS. 4 MM-THICK BUTTONS.





106  
WHITE / NAVY



119  
WHITE / GREY



506  
SKY BLUE / NAVY



601  
NAVY / WHITE



919  
BLACK / GREY



EASY CARE



WRINKLE  
RESIST 4/6



STRETCH  
0/6



WEIGHT  
134 G/M<sup>2</sup>



ORGANIC  
COTTON



RECYCLED  
MATERIALS



EASY CARE



STANDARD  
100  
SE 23-304  
RISE

**YB56 Twill**

REGULAR ♂ 2905601 S-4XL

SLIM ♂ 2905602 XS-XXL

WOMAN CONTEMP ♀ 2905605 XS-4XL

A high performance shirt that is made in a blended twill in preferred materials\* with added Easy Care treatment and modern contrast details. It has a hidden button down collar and as always, J.Harvest & Frost business shirts comes with taped seams and split yoke.

SOLID COLORS. 60% ORGANIC COTTON, 40% RECYCLED POLYESTER. 134 G/M<sup>2</sup>. EASY CARE. TAPED MAIN SEAMS. LONG SLEEVE. SINGLE ANGLE CUFF, WITH EXTRA BUTTONHOLE FOR CUFFLINKS.



501  
SKY BLUE



556  
MID BLUE

EASY CARE



WRINKLE  
RESIST 5/6



STRETCH  
2/6



WEIGHT  
120 G/M<sup>2</sup>



ORGANIC  
COTTON



RECYCLED  
MATERIALS



EASY CARE



STANDARD  
100  
SE 24-332  
RISE

**YB55 Jacquard**

REGULAR ♂ 2905501 S-4XL

SLIM ♂ 2905502 XS-XXL

WOMAN CONTEMP ♀ 2905505 XS-4XL

A micro-patterned shirt in a jacquard-weave made in a mix of organic cotton and recycled polyester. It has our popular hidden button down collar and discrete details such as contrast placket line and contrast button thread.

A solid colored shirt with a subtle dobby structure combined with a soft collar and cuffs gives the shirt a smart & modern look. When you get the shirt in hand you will immediately recognize its more to it than catches the eye. The feather-light weight at first, silky soft hand-touch from lyocell as well, and the incredible stretch effect for your comfort, makes this shirt a master of performance. The shirt is also easy-care treated, so you can simply wash & wear it if you like.

JACQUARD-WEAVE, MICRO-PATTERNED, 60% ORGANIC COTTON / 40% RECYCLED POLYESTER, 120 G/M<sup>2</sup>. EASY CARE TREATMENT. SOFT ROUND EDGE CUFF, WITH CUFFLINK HOLE. 4 MM-THICK BUTTONS.



601  
NAVY/WHITE DOT



NON-IRON

  
WRINKLE  
RESIST 5/6

  
STRETCH  
2/6

  
WEIGHT  
130 G/M<sup>2</sup>

  
NON-IRON

**PB49 Jacquard**

REGULAR ♂ 2904901 S-4XL

SLIM ♂ 2904902 XS-XXL

WOMAN ♀ 2904903 XS-4XL

A double 100's jacquard fabric, woven with white dots on navy background for a modern and sophisticated look. Modern cutaway collar with a soft interlining and hidden button down. Combine it with the full suit or together with jeans, either way it will serve you good.

Our developed fabric is made with a mechanical stretch for better comfort. The mechanical stretch is a new innovative way of giving comfort to a 100% natural long stapled, compact cotton fabric. It will give natural elasticity to the shirt of up to 12% stretch the weft way, and still keep our great Non-iron performance. This is innovative shirt-making at its best, and we enjoy taking part of it.

NAVY JACQUARD FABRIC, WOVEN WITH WHITE MICRO DOTS. 100% LONG STAPLED COMPACT COTTON- DOUBLE 100'S. 130 G/M<sup>2</sup>. INNOVATIVE MECHANICAL STRETCH. NON-IRON PATENTED ENVIRONMENTAL TREATMENT. TAPED MAIN-SEAMS.. LONG SLEEVE. SOFT ROUND EDGE -CUFF, WITH EXTRA BUTTONHOLE FOR CUFFLINKS. PEARL-LOOK BUTTONS,



# THE BEDFORD WEAVE

THE BEDFORD WEAVE, SOMETIMES REFERRED TO AS MICRO-CORD, IS A FABRIC STRUCTURE THAT OFFERS BOTH STRENGTH AND SUBTLE BEAUTY. RECOGNIZABLE BY ITS FINE VERTICAL LINES, IT CREATES A TEXTURE THAT IS ELEGANT BUT NEVER LOUD. ORIGINALLY, BEDFORD FABRICS WERE USED IN WORKWEAR AND UNIFORMS, VALUED FOR THEIR DURABILITY AND RESILIENCE.

TODAY, THE BEDFORD WEAVE HAS BEEN REINTERPRETED FOR MODERN SHIRTING. IN A SHIRT, THE STRUCTURE PROVIDES A DISCREET DEPTH AND AN UNDERSTATED VISUAL INTEREST COMPARED TO SMOOTH TWILL. IT FEELS FRESH, SLIGHTLY MORE EDGY, AND GIVES THE GARMENT A UNIQUE IDENTITY WITHOUT OVERPOWERING THE REST OF THE OUTFIT. THIS MAKES A BEDFORD SHIRT MORE THAN JUST CLOTHING — IT'S A TRUE POWER GARMENT, DESIGNED FOR MOMENTS WHEN YOU WANT TO PROJECT CONFIDENCE, CHARACTER, AND DISTINCTION.



556  
BLUE



864  
PURPLE

NON-IRON



**PB142 Oxford**

REGULAR ♂ 2914201 S-4XL

SLIM ♂ 2914202 XS-XXL

WOMAN ♀ 2914203 XS-4XL

Two tone seasonal color of sophisticated oxford fabric with incredible 20% stretch weft way, makes this shirt soft, super comfortable & yet a Non-Iron shirt. Modern Cut-Away collar. Hidden button down. Maybe our best take on smart-casual yet. Our guess is this model will quickly become one of your wardrobe essentials.

OXFORD WEAVE. 2 TONE COLOR. FREE FIT STRETCH. 96% LONG STAPLE 2-PLY COMPACT COTTON, 4% FREE FIT STRETCH. NON-IRON PATENTED ENVIRONMENTAL TREATMENT. TAPED MAIN-SEAMS. LONG SLEEVE. ROUND EDGE -CUFF, WITH EXTRA BUTTONHOLE FOR CUFFLINKS. 4 MM-THICK BUTTONS.



106  
WHITE



606  
NAVY



NON-IRON



WRINKLE  
RESIST 6/6



STRETCH  
2/6



WEIGHT  
130 G/M<sup>2</sup>



NON-IRON

**PB 146 Bedford**

REGULAR ♂ 2914601 S-4XL

SLIM ♂ 2914602 XS-XXL

WOMAN ♀ 2914603 XS-4XL

This is an edgy shirt with extreme cut-away collar. The microcord structure in the fabric that makes it stand out compared to our classic twill. The fabric in combination with extreme cut-away collar and a new kick-ass paisley contrast, makes a bold statement. The contrast is obvious on the white, and more discrete on the luxurious navy fabric. Wear it with jeans and a blazer or with a suit and sneakers and you will look impeccable, from the office to the dinner party.

100 % LONG STAPLE COTTON, 130 G/M<sup>2</sup>. MICROCORD BEDFORD STRUCTURE. NON-IRON. TAPED MAIN-SEAMS. SINGLE ANGLE CUFF, WITH CUFFLINK HOLE. LUXORIOUS, 4 MM THICK NAVY BUTTONS.



551  
INDIGO PAISLEY

NON-IRON

  
WRINKLE  
RESIST 5/6

  
STRETCH  
2/6

  
WEIGHT  
122 G/M<sup>2</sup>

  
NON-IRON

**PB143 Twill**

REGULAR ♂ 2914301 S-4XL

SLIM ♂ 2914302 XS-XXL

WOMAN ♀ 2914303 XS-4XL

A discreet yet bold indigo-colored paisley pattern shirt featuring a modern cut-away collar with a hidden button-down. Dress it up boldly with a tie or down with your slacks; either way, it allows you to stay comfortable and sharp all day with our renowned non-iron and natural stretch performance. Innovation and smartness walk hand in hand!

FINE TWILL, TWO TONE INDIGO COLOR PAISLEY. 100% COTTON, NATURAL STRETCH. LONG SLEEVE. SOFT ROUND EDGE CUFF. EXTRA BUTTON-HOLE FOR CUFFLINKS. 4 MM-THICK BUTTONS.



556  
BLUE



NON-IRON



WRINKLE  
RESIST 5/6



STRETCH  
2/6



WEIGHT  
125 G/M<sup>2</sup>



NON-IRON

**PB144 Brushed Jacquard**

REGULAR ♂ 2914401 S-4XL

SLIM ♂ 2914402 XS-XXL

WOMAN ♀ 2914403 XS-4XL

A lightweight non-iron dress shirt with brushed surface, that gives a unique, luxurious and super soft hand feeling. It has all the performance and hand feel needed with up to 20% stretch in weft.

The shirt has a soft modern cut-away collar with hidden button-down function. Blue details in collar cuffs and buttoning.  
Easy to wear. Smart & casual.

TWO TONE INDIGO JAQUARD PATTERN. BRUSHED SURFACE FOR SOFTNESS. 100% LONG STAPLE COTTON 125 G/M<sup>2</sup>, MECHANICAL STRETCH. NON IRON. LONG SLEEVE. SOFT ROUND EDGE CUFF WITH EXTRA BUTTONHOLE FOR CUFFLINKS. 4 MM-THICK BUTTONS.



360°  
STRETCH



LENZING™  
ECOVERO™



FULL  
SIZE RANGE

♂ STANDARD 44-62

♂ EXTRA LONG 48L-56L

♂ SHORT 46S-54S

♂ SHORT & WIDE 46SW-56SW

♀ STANDARD 32-48

# SIGNATURE SUIT PROGRAM

EXPERIENCE THE PERFECT BALANCE OF CLASSIC TAILORING AND MODERN INNOVATION. THE SIGNATURE PROGRAM IS CRAFTED IN OUR PREFERRED MATERIAL, FEATURING LENZING™ ECOVERO™ CERTIFIED VISCOSE THAT USES 50% LESS WATER AND GENERATES 50% LESS CO<sub>2</sub> THAN GENERIC VISCOSE FIBERS. DESIGNED FOR ALL-DAY ELEGANCE, THE FABRIC RESISTS CREASING, WHILE 360° STRETCH ENSURES COMPLETE FREEDOM OF MOVEMENT. AVAILABLE IN STANDARD MEN'S AND WOMEN'S SIZES—WITH THE OPTION TO MIX AND MATCH—PLUS SPECIAL SIZES IN STOCK. OFFERED IN TIMELESS, VERSATILE COLORS FOR A POLISHED LOOK EVERY DAY.





NEW STYLE



600  
NAVY



900  
BLACK

SIZES

MEN

STANDARD

44-62,

EXTRA LONG

46L-56L,

WOMAN

STANDARD

32-48,



WRINKLE  
RESIST 4/6



STRETCH  
4/6



WEIGHT  
260 G/M<sup>2</sup>



Signature Suit Vest

MEN ♂ 2962311 STANDARD 44-62  
EXTRA LONG 46L-56L

WOMEN ♀ 2962313 STANDARD 32-48

Suit vest with a classic formal look, made from a modern stretch fabric in Preferred Material. The material blend resists wrinkles and gives you unlimited freedom of movement with 360-degree stretch. The perfect addition to a suit. Pair with Signature Blazer and Signature Trousers.

63% RECYCLED POLYESTER, 33% LENZING™ ECOVERO™ VISCOSE, 4% ELASTANE



600  
NAVY



900  
BLACK

SIZES

MEN

STANDARD  
44-62,  
EXTRA LONG  
46L-56L,  
SHORT & WIDE  
46SW-56SW

WOMAN

STANDARD  
32-48



NEW STYLE



WRINKLE  
RESIST 4/6



STRETCH  
4/6



WEIGHT  
260 G/M<sup>2</sup>



STANDARD  
100  
SE 23-304  
RSE

Signature Suit Blazer

MEN ♂ 2962301 STANDARD 44-62, EXTRA LONG 46L-56L, SHORT & WIDE 46SW-56SW  
WOMEN ♀ 2962303 STANDARD 32-48

Single-breasted blazer with a classic formal look, made from a modern stretch fabric in Preferred Material. The material blend resists wrinkles and gives you unlimited freedom of movement with 360-degree stretch. The blazer is fully lined with softly constructed shoulders. Pair with Signature Trousers and Signature Vest for a complete suit.

63% RECYCLED POLYESTER, 33% LENZING™ ECOVERO™ VISCOSE, 4% ELASTANE



600  
NAVY



900  
BLACK

NEW STYLE



SIZES  
WOMAN  
STANDARD  
32-48,  
EXTRA LONG  
34L-44L

  
WRINKLE  
RESIST 4/6

  
STRETCH  
4/6

  
WEIGHT  
260 G/M<sup>2</sup>

EcoVero™

OEKO  
TEX™

STANDARD  
100  
SE 23-304  
RSC

**Signature Suit Skirt**

WOMEN ♀ 2962333  
STANDARD 32-48, EXTRA LONG 34L-44L

Pencil skirt with a classic formal look, made from a modern stretch fabric in Preferred Material. The material blend resists wrinkles and gives you comfortable freedom of movement with 360-degree stretch. Match with a shirt or blouse. Pair with Signature Blazer and Signature Vest for a complete suit.

63% RECYCLED POLYESTER, 33% LENZING™ ECOVERO™ VISCOSE, 4% ELASTANE



600  
NAVY



900  
BLACK

SIZES

MEN  
STANDARD 4  
4-62,  
EXTRA LONG  
46L-56L,  
SHORT  
46S-56S,  
SHORT & WIDE  
46SW-56SW

WOMAN  
STANDARD 32-48



NEW STYLE



WRINKLE  
RESIST 4/6



STRETCH  
4/6



WEIGHT  
260 G/M<sup>2</sup>



Signature Suit Trouser

MEN ♂ 2962321  
STANDARD 44-62, EXTRA LONG 46L-56L,  
SHORT 46S-56S, SHORT & WIDE 46SW-56SW

WOMEN ♀ 2962323  
STANDARD 32-48

Suit trousers with a classic formal look, made from a modern stretch fabric in Preferred Material. The material blend resists wrinkles and gives you unlimited freedom of movement with 360-degree stretch. Pair with Signature Blazer and Signature Vest for a complete suit.

63% RECYCLED POLYESTER, 33% LENZING™ ECOVERO™ VISCOSE, 4% ELASTANE









600  
NAVY



900  
BLACK



490  
RED

**Giftbox Solid Scarf**

2920600 68 X 68 CM

Monochrome silk scarf, perfect to tie around your neck in a beautiful knot to lift your outfit to higher grounds. Comes in an exclusive giftbox. 68cm \* 68 cm

100% SILK



600  
NAVY



900  
BLACK



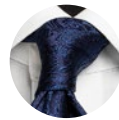
490  
RED

**Giftbox Solid Hankie & Lapel Pin**

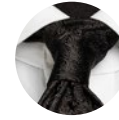
2920500 30 X 30 CM

Monochrome silk hankie paired with a matching lapel pin. The two comes in an exclusive giftbox. Unbutton the two top buttons in your J.H&F shirt, put the hankie casually in your blazer's chest pocket and put the lapel pin on your lapel – you're ready for a party! Hankie size: 30 cm \* 30 cm.

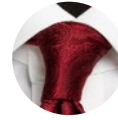
HANKIE: 100% SILK. LAPEL PIN: POLYESTER, METAL



600  
NAVY



900  
BLACK



490  
RED

**Giftbox Solid Paisley Tie**

2910400 7 CM WIDE

Monochrome silk tie with tone-on-tone paisley pattern. Tie width is 7 cm. Comes in an exclusive giftbox.

100% SILK

## THE MALE CUTS



REGULAR FIT



TAILORED FIT



SLIM FIT

OUR SHIRTS COME IN THREE DISTINCT FITS FOR BOTH MEN AND WOMEN, EACH TAILORED TO PROVIDE YOUR IDEAL SILHOUETTE. LISTED FROM WIDE TO SLIM:

MEN: REGULAR, TAILORED AND SLIM FIT

WOMEN: WOMAN RELAXED, WOMAN CONTEMPORARY AND WOMAN

CHECK THE SIZE GUIDE AT THE END TO FIND THE CUT THAT SUITS YOU BEST.

## THE FEMALE CUTS



WOMAN RELAXED



WOMAN CONTEMPORARY



WOMAN



GET YOUR CUT



# FIND YOUR STYLE



| FEATURE ▾                                      | MODEL ▶ | BB60                             | GB01                             | GB02                             | YB50                             | YB50 CHEST POCKET                | YB50 S/S                         | RB20                             | RB120                            | YB51                             | YB56                             | RB121                            | RB122                            | RB123                            |
|--|---------|----------------------------------|----------------------------------|----------------------------------|----------------------------------|----------------------------------|----------------------------------|----------------------------------|----------------------------------|----------------------------------|----------------------------------|----------------------------------|----------------------------------|----------------------------------|
| NEVER-IRON                                     |         | <input checked="" type="radio"/> | <input type="radio"/>            | <input type="radio"/>            | <input type="radio"/>            | <input type="radio"/>            | <input type="radio"/>            | <input type="radio"/>            | <input type="radio"/>            | <input type="radio"/>            | <input type="radio"/>            | <input type="radio"/>            | <input type="radio"/>            | <input type="radio"/>            |
| NON-IRON                                       |         | <input type="radio"/>            | <input checked="" type="radio"/> | <input checked="" type="radio"/> | <input checked="" type="radio"/> | <input checked="" type="radio"/> | <input checked="" type="radio"/> | <input checked="" type="radio"/> | <input checked="" type="radio"/> | <input type="radio"/>            | <input type="radio"/>            | <input checked="" type="radio"/> | <input checked="" type="radio"/> | <input checked="" type="radio"/> |
| TAPED SEAMS                                    |         | <input checked="" type="radio"/> | <input checked="" type="radio"/> | <input checked="" type="radio"/> | <input checked="" type="radio"/> | <input checked="" type="radio"/> | <input checked="" type="radio"/> | <input checked="" type="radio"/> | <input checked="" type="radio"/> | <input checked="" type="radio"/> | <input checked="" type="radio"/> | <input checked="" type="radio"/> | <input checked="" type="radio"/> | <input checked="" type="radio"/> |
| EASY CARE                                      |         | <input type="radio"/>            | <input type="radio"/>            | <input type="radio"/>            | <input checked="" type="radio"/> | <input checked="" type="radio"/> | <input type="radio"/>            | <input type="radio"/>            | <input type="radio"/>            | <input checked="" type="radio"/> | <input checked="" type="radio"/> | <input type="radio"/>            | <input type="radio"/>            | <input type="radio"/>            |
| SPLIT YOKE                                     |         | <input checked="" type="radio"/> | <input checked="" type="radio"/> | <input checked="" type="radio"/> | <input checked="" type="radio"/> | <input checked="" type="radio"/> | <input checked="" type="radio"/> | <input checked="" type="radio"/> | <input checked="" type="radio"/> | <input checked="" type="radio"/> | <input checked="" type="radio"/> | <input checked="" type="radio"/> | <input checked="" type="radio"/> | <input checked="" type="radio"/> |
| CUFFLINKS OPENINGS                             |         | <input checked="" type="radio"/> | <input checked="" type="radio"/> | <input checked="" type="radio"/> | <input checked="" type="radio"/> | <input checked="" type="radio"/> | <input checked="" type="radio"/> | <input checked="" type="radio"/> | <input checked="" type="radio"/> | <input checked="" type="radio"/> | <input checked="" type="radio"/> | <input checked="" type="radio"/> | <input checked="" type="radio"/> | <input checked="" type="radio"/> |
| WOVEN FABRIC                                   |         | <input checked="" type="radio"/> | <input checked="" type="radio"/> | <input checked="" type="radio"/> | <input checked="" type="radio"/> | <input checked="" type="radio"/> | <input checked="" type="radio"/> | <input checked="" type="radio"/> | <input checked="" type="radio"/> | <input checked="" type="radio"/> | <input checked="" type="radio"/> | <input checked="" type="radio"/> | <input checked="" type="radio"/> | <input checked="" type="radio"/> |
| KNITTED FABRIC                                 |         | <input type="radio"/>            | <input type="radio"/>            | <input type="radio"/>            | <input type="radio"/>            | <input type="radio"/>            | <input type="radio"/>            | <input type="radio"/>            | <input type="radio"/>            | <input type="radio"/>            | <input type="radio"/>            | <input type="radio"/>            | <input type="radio"/>            | <input type="radio"/>            |
| STRETCH FIBERS                                 |         | <input type="radio"/>            | <input type="radio"/>            | <input checked="" type="radio"/> | <input type="radio"/>            | <input type="radio"/>            | <input type="radio"/>            | <input type="radio"/>            | <input type="radio"/>            | <input type="radio"/>            | <input type="radio"/>            | <input checked="" type="radio"/> | <input type="radio"/>            | <input type="radio"/>            |
| STRETCH, MECANIC                               |         | <input type="radio"/>            | <input type="radio"/>            | <input type="radio"/>            | <input type="radio"/>            | <input type="radio"/>            | <input type="radio"/>            | <input type="radio"/>            | <input type="radio"/>            | <input type="radio"/>            | <input type="radio"/>            | <input type="radio"/>            | <input type="radio"/>            | <input type="radio"/>            |
| 3 CM SHORTER BODY LENGTH                       |         | <input type="radio"/>            | <input type="radio"/>            | <input type="radio"/>            | <input type="radio"/>            | <input type="radio"/>            | <input type="radio"/>            | <input type="radio"/>            | <input type="radio"/>            | <input type="radio"/>            | <input type="radio"/>            | <input type="radio"/>            | <input type="radio"/>            | <input type="radio"/>            |
| CHEST POCKET                                   |         | <input type="radio"/>            | <input type="radio"/>            | <input type="radio"/>            | <input type="radio"/>            | <input checked="" type="radio"/> | <input type="radio"/>            | <input type="radio"/>            | <input type="radio"/>            | <input type="radio"/>            | <input type="radio"/>            | <input checked="" type="radio"/> | <input type="radio"/>            | <input type="radio"/>            |
| MATERIAL BLEND                                 |         | <input type="radio"/>            | <input type="radio"/>            | <input checked="" type="radio"/> | <input checked="" type="radio"/> | <input checked="" type="radio"/> | <input type="radio"/>            | <input type="radio"/>            | <input type="radio"/>            | <input checked="" type="radio"/> | <input checked="" type="radio"/> | <input checked="" type="radio"/> | <input type="radio"/>            | <input type="radio"/>            |
| 100% COTTON                                    |         | <input checked="" type="radio"/> | <input checked="" type="radio"/> | <input type="radio"/>            | <input type="radio"/>            | <input type="radio"/>            | <input type="radio"/>            | <input checked="" type="radio"/> | <input checked="" type="radio"/> | <input type="radio"/>            | <input type="radio"/>            | <input type="radio"/>            | <input checked="" type="radio"/> | <input checked="" type="radio"/> |
| SHORT SLEEVE (MALE)                            |         | <input type="radio"/>            | <input type="radio"/>            | <input type="radio"/>            | <input type="radio"/>            | <input type="radio"/>            | <input checked="" type="radio"/> | <input type="radio"/>            | <input type="radio"/>            | <input type="radio"/>            | <input type="radio"/>            | <input type="radio"/>            | <input type="radio"/>            | <input type="radio"/>            |
| »PREFERRED MATERIAL«*                          |         | <input type="radio"/>            | <input type="radio"/>            | <input type="radio"/>            | <input checked="" type="radio"/> | <input checked="" type="radio"/> | <input type="radio"/>            | <input type="radio"/>            | <input type="radio"/>            | <input checked="" type="radio"/> | <input checked="" type="radio"/> | <input type="radio"/>            | <input type="radio"/>            | <input type="radio"/>            |
| OEKO-TEX 100 CERTIFIED                         |         | <input checked="" type="radio"/> | <input checked="" type="radio"/> | <input checked="" type="radio"/> | <input checked="" type="radio"/> | <input checked="" type="radio"/> | <input checked="" type="radio"/> | <input checked="" type="radio"/> | <input checked="" type="radio"/> | <input checked="" type="radio"/> | <input checked="" type="radio"/> | <input checked="" type="radio"/> | <input checked="" type="radio"/> | <input checked="" type="radio"/> |
| COLLAR: BUTTON DOWN                            |         | <input type="radio"/>            | <input type="radio"/>            | <input type="radio"/>            | <input type="radio"/>            | <input type="radio"/>            | <input type="radio"/>            | <input type="radio"/>            | <input type="radio"/>            | <input type="radio"/>            | <input type="radio"/>            | <input checked="" type="radio"/> | <input type="radio"/>            | <input type="radio"/>            |
| STIFF COLLAR: SEMI CUT AWAY                    |         | <input type="radio"/>            | <input checked="" type="radio"/> | <input type="radio"/>            | <input checked="" type="radio"/> | <input checked="" type="radio"/> | <input checked="" type="radio"/> | <input checked="" type="radio"/> | <input checked="" type="radio"/> | <input checked="" type="radio"/> | <input type="radio"/>            | <input type="radio"/>            | <input type="radio"/>            | <input type="radio"/>            |
| SOFT COLLAR: SEMI CUT AWAY, HIDDEN BUTTON DOWN |         | <input checked="" type="radio"/> | <input type="radio"/>            | <input checked="" type="radio"/> | <input type="radio"/>            | <input type="radio"/>            | <input type="radio"/>            | <input type="radio"/>            | <input type="radio"/>            | <input type="radio"/>            | <input checked="" type="radio"/> | <input type="radio"/>            | <input checked="" type="radio"/> | <input checked="" type="radio"/> |
| STIFF COLLAR: EXTREME CUT AWAY                 |         | <input type="radio"/>            | <input type="radio"/>            | <input type="radio"/>            | <input type="radio"/>            | <input type="radio"/>            | <input type="radio"/>            | <input type="radio"/>            | <input type="radio"/>            | <input type="radio"/>            | <input type="radio"/>            | <input type="radio"/>            | <input type="radio"/>            | <input type="radio"/>            |
| REGULAR FIT + SLIM FIT                         |         | <input checked="" type="radio"/> | <input checked="" type="radio"/> | <input checked="" type="radio"/> | <input checked="" type="radio"/> | <input checked="" type="radio"/> | <input checked="" type="radio"/> | <input checked="" type="radio"/> | <input checked="" type="radio"/> | <input checked="" type="radio"/> | <input checked="" type="radio"/> | <input checked="" type="radio"/> | <input checked="" type="radio"/> | <input checked="" type="radio"/> |
| TAILORED FIT                                   |         | <input type="radio"/>            | <input type="radio"/>            | <input type="radio"/>            | <input type="radio"/>            | <input type="radio"/>            | <input type="radio"/>            | <input type="radio"/>            | <input type="radio"/>            | <input type="radio"/>            | <input type="radio"/>            | <input type="radio"/>            | <input type="radio"/>            | <input type="radio"/>            |
| WOMAN FIT                                      |         | <input checked="" type="radio"/> | <input checked="" type="radio"/> | <input type="radio"/>            | <input checked="" type="radio"/> | <input type="radio"/>            | <input type="radio"/>            | <input checked="" type="radio"/> | <input checked="" type="radio"/> | <input checked="" type="radio"/> | <input type="radio"/>            | <input checked="" type="radio"/> | <input checked="" type="radio"/> | <input type="radio"/>            |
| WOMAN CONTEMPORARY FIT                         |         | <input type="radio"/>            | <input type="radio"/>            | <input checked="" type="radio"/> | <input checked="" type="radio"/> | <input type="radio"/>            | <input type="radio"/>            | <input type="radio"/>            | <input type="radio"/>            | <input type="radio"/>            | <input checked="" type="radio"/> | <input type="radio"/>            | <input type="radio"/>            | <input checked="" type="radio"/> |
| WOMAN RELAXED FIT                              |         | <input type="radio"/>            | <input checked="" type="radio"/> | <input type="radio"/>            | <input type="radio"/>            | <input type="radio"/>            | <input type="radio"/>            | <input type="radio"/>            | <input type="radio"/>            | <input type="radio"/>            | <input type="radio"/>            | <input type="radio"/>            | <input type="radio"/>            | <input type="radio"/>            |

NO     YES     YES, IN TRANSITION

## CLASSICS WITH A TWIST

## KNITTED &amp; CASUAL



| FEATURE ▼ MODEL ▶                              | YB55                             | PB49                             | PB142                            | PB146                            | PB143                            | PB144                            | YB57                             | IB132                            | IB132<br>S/S                     | PB147                            | IB131                            | IB135                            | YB54                             |
|--|----------------------------------|----------------------------------|----------------------------------|----------------------------------|----------------------------------|----------------------------------|----------------------------------|----------------------------------|----------------------------------|----------------------------------|----------------------------------|----------------------------------|----------------------------------|
| NEVER-IRON                                     | <input type="radio"/>            | <input type="radio"/>            | <input type="radio"/>            | <input type="radio"/>            | <input type="radio"/>            | <input type="radio"/>            | <input type="radio"/>            | <input type="radio"/>            | <input type="radio"/>            | <input type="radio"/>            | <input type="radio"/>            | <input type="radio"/>            | <input type="radio"/>            |
| NON-IRON                                       | <input type="radio"/>            | <input checked="" type="radio"/> | <input checked="" type="radio"/> | <input checked="" type="radio"/> | <input checked="" type="radio"/> | <input checked="" type="radio"/> | <input type="radio"/>            | <input type="radio"/>            | <input type="radio"/>            | <input type="radio"/>            | <input type="radio"/>            | <input type="radio"/>            | <input type="radio"/>            |
| TAPED SEAMS                                    | <input type="radio"/>            | <input checked="" type="radio"/> | <input checked="" type="radio"/> | <input checked="" type="radio"/> | <input checked="" type="radio"/> | <input checked="" type="radio"/> | <input type="radio"/>            | <input type="radio"/>            | <input type="radio"/>            | <input type="radio"/>            | <input type="radio"/>            | <input type="radio"/>            | <input type="radio"/>            |
| EASY CARE                                      | <input checked="" type="radio"/> | <input type="radio"/>            | <input type="radio"/>            | <input type="radio"/>            | <input type="radio"/>            | <input type="radio"/>            | <input checked="" type="radio"/> | <input checked="" type="radio"/> | <input checked="" type="radio"/> | <input type="radio"/>            | <input checked="" type="radio"/> | <input checked="" type="radio"/> | <input checked="" type="radio"/> |
| SPLIT YOKE                                     | <input checked="" type="radio"/> | <input checked="" type="radio"/> | <input checked="" type="radio"/> | <input checked="" type="radio"/> | <input checked="" type="radio"/> | <input checked="" type="radio"/> | <input checked="" type="radio"/> | <input checked="" type="radio"/> | <input checked="" type="radio"/> | <input checked="" type="radio"/> | <input checked="" type="radio"/> | <input checked="" type="radio"/> | <input checked="" type="radio"/> |
| CUFFLINKS OPENINGS                             | <input checked="" type="radio"/> | <input checked="" type="radio"/> | <input checked="" type="radio"/> | <input checked="" type="radio"/> | <input checked="" type="radio"/> | <input checked="" type="radio"/> | <input checked="" type="radio"/> | <input checked="" type="radio"/> | <input type="radio"/>            | <input checked="" type="radio"/> | <input checked="" type="radio"/> | <input checked="" type="radio"/> | <input checked="" type="radio"/> |
| WOVEN FABRIC                                   | <input checked="" type="radio"/> | <input checked="" type="radio"/> | <input checked="" type="radio"/> | <input checked="" type="radio"/> | <input checked="" type="radio"/> | <input checked="" type="radio"/> | <input type="radio"/>            | <input type="radio"/>            | <input type="radio"/>            | <input type="radio"/>            | <input type="radio"/>            | <input type="radio"/>            | <input checked="" type="radio"/> |
| KNITTED FABRIC                                 | <input type="radio"/>            | <input type="radio"/>            | <input type="radio"/>            | <input type="radio"/>            | <input type="radio"/>            | <input type="radio"/>            | <input checked="" type="radio"/> | <input checked="" type="radio"/> | <input checked="" type="radio"/> | <input checked="" type="radio"/> | <input checked="" type="radio"/> | <input checked="" type="radio"/> | <input type="radio"/>            |
| STRETCH FIBERS                                 | <input type="radio"/>            | <input type="radio"/>            | <input checked="" type="radio"/> | <input type="radio"/>            | <input type="radio"/>            | <input type="radio"/>            | <input type="radio"/>            | <input type="radio"/>            | <input type="radio"/>            | <input checked="" type="radio"/> | <input type="radio"/>            | <input type="radio"/>            | <input checked="" type="radio"/> |
| STRETCH, MECANIC                               | <input type="radio"/>            | <input type="radio"/>            | <input type="radio"/>            | <input type="radio"/>            | <input type="radio"/>            | <input type="radio"/>            | <input checked="" type="radio"/> | <input checked="" type="radio"/> | <input checked="" type="radio"/> | <input checked="" type="radio"/> | <input checked="" type="radio"/> | <input checked="" type="radio"/> | <input type="radio"/>            |
| 3 CM SHORTER BODY LENGTH                       | <input type="radio"/>            | <input type="radio"/>            | <input type="radio"/>            | <input type="radio"/>            | <input type="radio"/>            | <input type="radio"/>            | <input checked="" type="radio"/> | <input checked="" type="radio"/> | <input checked="" type="radio"/> | <input checked="" type="radio"/> | <input checked="" type="radio"/> | <input checked="" type="radio"/> | <input checked="" type="radio"/> |
| CHEST POCKET                                   | <input type="radio"/>            | <input type="radio"/>            | <input type="radio"/>            | <input type="radio"/>            | <input type="radio"/>            | <input type="radio"/>            | <input type="radio"/>            | <input type="radio"/>            | <input type="radio"/>            | <input type="radio"/>            | <input type="radio"/>            | <input type="radio"/>            | <input checked="" type="radio"/> |
| MATERIAL BLEND                                 | <input checked="" type="radio"/> | <input type="radio"/>            | <input checked="" type="radio"/> | <input type="radio"/>            | <input type="radio"/>            | <input type="radio"/>            | <input checked="" type="radio"/> | <input checked="" type="radio"/> | <input checked="" type="radio"/> | <input checked="" type="radio"/> | <input type="radio"/>            | <input type="radio"/>            | <input checked="" type="radio"/> |
| 100% COTTON                                    | <input type="radio"/>            | <input checked="" type="radio"/> | <input type="radio"/>            | <input checked="" type="radio"/> | <input checked="" type="radio"/> | <input type="radio"/>            | <input type="radio"/>            | <input type="radio"/>            | <input type="radio"/>            | <input type="radio"/>            | <input checked="" type="radio"/> | <input checked="" type="radio"/> | <input type="radio"/>            |
| SHORT SLEEVE (MALE)                            | <input type="radio"/>            | <input type="radio"/>            | <input type="radio"/>            | <input type="radio"/>            | <input type="radio"/>            | <input type="radio"/>            | <input type="radio"/>            | <input type="radio"/>            | <input checked="" type="radio"/> | <input type="radio"/>            | <input type="radio"/>            | <input type="radio"/>            | <input type="radio"/>            |
| »PREFERRED MATERIAL«*                          | <input checked="" type="radio"/> | <input type="radio"/>            | <input type="radio"/>            | <input type="radio"/>            | <input type="radio"/>            | <input type="radio"/>            | <input checked="" type="radio"/> | <input type="radio"/>            | <input type="radio"/>            | <input checked="" type="radio"/> | <input type="radio"/>            | <input type="radio"/>            | <input type="radio"/>            |
| OEKO-TEX 100 CERTIFIED                         | <input checked="" type="radio"/> | <input checked="" type="radio"/> | <input checked="" type="radio"/> | <input checked="" type="radio"/> | <input type="radio"/>            | <input type="radio"/>            | <input checked="" type="radio"/> | <input checked="" type="radio"/> | <input checked="" type="radio"/> | <input type="radio"/>            | <input checked="" type="radio"/> | <input checked="" type="radio"/> | <input checked="" type="radio"/> |
| COLLAR: BUTTON DOWN                            | <input type="radio"/>            | <input type="radio"/>            | <input type="radio"/>            | <input type="radio"/>            | <input type="radio"/>            | <input type="radio"/>            | <input type="radio"/>            | <input type="radio"/>            | <input type="radio"/>            | <input type="radio"/>            | <input type="radio"/>            | <input type="radio"/>            | <input checked="" type="radio"/> |
| STIFF COLLAR: SEMI CUT AWAY                    | <input type="radio"/>            | <input type="radio"/>            | <input type="radio"/>            | <input type="radio"/>            | <input type="radio"/>            | <input type="radio"/>            | <input type="radio"/>            | <input type="radio"/>            | <input type="radio"/>            | <input type="radio"/>            | <input type="radio"/>            | <input type="radio"/>            | <input type="radio"/>            |
| SOFT COLLAR: SEMI CUT AWAY, HIDDEN BUTTON DOWN | <input checked="" type="radio"/> | <input checked="" type="radio"/> | <input checked="" type="radio"/> | <input type="radio"/>            | <input checked="" type="radio"/> | <input checked="" type="radio"/> | <input checked="" type="radio"/> | <input checked="" type="radio"/> | <input checked="" type="radio"/> | <input checked="" type="radio"/> | <input checked="" type="radio"/> | <input checked="" type="radio"/> | <input type="radio"/>            |
| STIFF COLLAR: EXTREME CUT AWAY                 | <input type="radio"/>            | <input type="radio"/>            | <input type="radio"/>            | <input checked="" type="radio"/> | <input type="radio"/>            | <input type="radio"/>            | <input type="radio"/>            | <input type="radio"/>            | <input type="radio"/>            | <input type="radio"/>            | <input type="radio"/>            | <input type="radio"/>            | <input type="radio"/>            |
| REGULAR FIT + SLIM FIT                         | <input checked="" type="radio"/> | <input checked="" type="radio"/> | <input checked="" type="radio"/> | <input checked="" type="radio"/> | <input checked="" type="radio"/> | <input checked="" type="radio"/> | <input checked="" type="radio"/> | <input checked="" type="radio"/> | <input checked="" type="radio"/> | <input type="radio"/>            | <input checked="" type="radio"/> | <input checked="" type="radio"/> | <input checked="" type="radio"/> |
| TAILORED FIT                                   | <input type="radio"/>            | <input type="radio"/>            | <input type="radio"/>            | <input type="radio"/>            | <input type="radio"/>            | <input type="radio"/>            | <input type="radio"/>            | <input type="radio"/>            | <input type="radio"/>            | <input checked="" type="radio"/> | <input type="radio"/>            | <input type="radio"/>            | <input type="radio"/>            |
| WOMAN FIT                                      | <input type="radio"/>            | <input checked="" type="radio"/> | <input checked="" type="radio"/> | <input checked="" type="radio"/> | <input checked="" type="radio"/> | <input checked="" type="radio"/> | <input type="radio"/>            | <input type="radio"/>            | <input type="radio"/>            | <input type="radio"/>            | <input checked="" type="radio"/> | <input type="radio"/>            | <input checked="" type="radio"/> |
| WOMAN CONTEMPORARY FIT                         | <input checked="" type="radio"/> | <input type="radio"/>            | <input type="radio"/>            | <input type="radio"/>            | <input type="radio"/>            | <input type="radio"/>            | <input checked="" type="radio"/> | <input checked="" type="radio"/> | <input type="radio"/>            | <input checked="" type="radio"/> | <input type="radio"/>            | <input checked="" type="radio"/> | <input type="radio"/>            |
| WOMAN RELAXED FIT                              | <input type="radio"/>            | <input type="radio"/>            | <input type="radio"/>            | <input type="radio"/>            | <input type="radio"/>            | <input type="radio"/>            | <input type="radio"/>            | <input type="radio"/>            | <input type="radio"/>            | <input type="radio"/>            | <input type="radio"/>            | <input type="radio"/>            | <input type="radio"/>            |

\*CONTAINS »PREFERRED MATERIAL« ACCORDING TO THE TEXTILE EXCHANGE DEFINITION. TEXTILEEXCHANGE.ORG FOR ADDITIONAL INFORMATION.



# COMFY

## COLLECTION

Presenting the J. Harvest & Frost Comfy Collection —where ultimate comfort meets refined style. Designed for those who seek a relaxed look without compromising on quality or elegance, these shirts blend soft, premium fabrics with thoughtful details for all-day ease and sophistication.

Embrace comfort without sacrificing style with the Comfy Collection. Crafted to keep you looking sharp and feeling great, no matter the day ahead.

Our knitted fabric shirts offer exceptional comfort with a naturally stretchy feel that moves with you. The soft texture of knitted fabrics provides a cozy fit, making them ideal for all-day wear. Perfect for a relaxed, polished look, they balance style and ease effortlessly.





101  
WHITE



501  
SKY BLUE



701  
GREEN



NATURAL  
STRETCH



WRINKLE  
RESIST 4/6



STRETCH  
4/6



WEIGHT  
146 G/M<sup>2</sup>



ORGANIC  
COTTON



RECYCLED  
MATERIALS



KNITTED  
FABRIC



EASY CARE



**YB57 King Knit**

REGULAR ♂ 2905701 S-4XL

SLIM ♂ 2905702 XS-XXL

WOMAN CONTEMP ♀ 2905705 XS-4XL

The King Knit Technique gives this shirt a nice texture and natural stretch. The fabric is Easy-Care treated and made from a blend of Preferred Materials. The white option is solid, while the texture is very visible in the Sky Blue and Green options. Body length is 3 cm shorter.

65% ORGANIC COTTON, 35% RECYCLED POLYESTER. KING KNIT, EASY CARE.







100  
WHITE



500  
SKYBLUE



600  
NAVY



900  
BLACK

NATURAL  
STRETCH



**IB132 S/S Interlock Knit**

REGULAR ♂ 2913211 S-4XL SLIM ♂ 2913222 XS-XXL

The Knit Interlock Short Sleeved Shirt. It has soft modern cut away hidden button down collar, side splits and fold up sleeves. A comfortable knitted Easy Care-treated modern business classic with natural stretch performance and tone-in-tone details. Body length is 3 cm shorter than our business models.

71% LONG STAPLE COTTON, 29% RECYCLED POLYESTER



100  
WHITE



500  
SKYBLUE



600  
NAVY



900  
BLACK

NATURAL  
STRETCH



WRINKLE  
RESIST 5/6



STRETCH  
5/6



WEIGHT  
159 G/M<sup>2</sup>



RECYCLED  
MATERIALS



KNITTED  
FABRIC



EASY CARE



### IB132 Interlock Knit

REGULAR ♂ 2913201 S-4XL

SLIM ♂ 2913202 XS-XXL

WOMAN CONTEMP ♀ 2913205 XS-4XL

The Knit Interlock Shirt. A comfortable knitted Easy Care-treated modern business classic with natural stretch performance and tone-in-tone details. It has soft modern cut away hidden button down collar. Wear it with a suit and tie on the business meeting and casually untucked on the weekend. Body Length is 3 cm shorter than our business models.

71% LONG STAPLE COTTON, 29% RECYCLED POLYESTER. 159 G/M<sup>2</sup>. EASY CARE.



006  
NAVY PRINT

NATURAL  
STRETCH

  
WRINKLE  
RESIST 5/6

  
STRETCH  
5/6

  
WEIGHT  
135 G/M<sup>2</sup>

  
KNITTED  
FABRIC

  
EASY CARE

**IB131 Pique Knit**

REGULAR ♂ 2913101 S-4XL

SLIM ♂ 2913102 XS-XXL

WOMAN ♀ 2913103 XS-4XL

Knitted from the finest long-staple compact cotton for ultimate softness, this shirt ensures you look your best at the home office while feeling as comfortable as if you were in pajamas. Featuring a hidden button-down collar, it transitions effortlessly from the office to the dinner party. Available in three stylish prints, this shirt combines the comfort of a t-shirt with a luxurious look, thanks to high-end double 60 compact yarn and a soft treatment. Wash, hang dry, and wear – it's that easy. We're confident in this new way of crafting fine shirts and look forward to introducing more colors and patterns to the knitted program. Enjoy!

100% LONG STAPLE 2-PLY COMPACT COTTON, PIQUÉ-KNITTED, 135 G/M<sup>2</sup>, 100% LONG-STAPLE COMPACT COTTON. 360° STRETCH. LUXURIOUS, 4 MM THICK, NAVY BUTTONS.







100  
WHITE



500  
SKY BLUE



600  
NAVY



900  
BLACK



910  
GREY MELANGE



NATURAL  
STRETCH



WRINKLE  
RESIST 4/6



STRETCH  
4/6



WEIGHT  
160 G/M<sup>2</sup>



KNITTED  
FABRIC



EASY CARE



STANDARD  
100  
SE 23-303  
RISE

**IB135 Pique Knit**

REGULAR ♂ 2913501 S-4XL

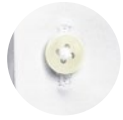
SLIM ♂ 2913502 XS-XXL

WOMAN CONTEMP ♀ 2913505 XS-4XL

The beautiful Pique Knit fabric gives the shirt a natural stretch and a very soft, comfortable feel. The perfect Casual shirt. Melange effect in color 910 Grey. The other colors are solid. Body length is 3 cm shorter than our business

100% COTTON. PIQUE KNIT, EASY CARE





100  
WHITE



500  
SKY BLUE



SUPER STRETCH

  
WRINKLE  
RESIST 2/6

  
STRETCH  
6/6

  
WEIGHT  
145 G/M<sup>2</sup>

  
KNITTED  
FABRIC

  
RECYCLED  
MATERIALS

 STANDARD  
100  
SE 23-304  
RSC

**PB 147 Super Stretch**

TAILORED ♂ 2914700 XS-4XL

WOMAN CONTEMP ♀ 2914705 XS-4XL

This is our super-stretch shirt made from a lightweight, technical fabric that will follow your every move. Wear it as a business shirt or a casual shirt—you'll look and feel great either way. Body length is 3 cm shorter than our woven business models.

85% RECYCLED POLYAMIDE, 15% ELASTANE, JERSEY KNIT





100  
WHITE



500  
SKY BLUE



600  
NAVY



900  
BLACK



EASY CARE

STRETCH



WRINKLE  
RESIST 4/6



STRETCH  
4/6



WEIGHT  
160 G/M<sup>2</sup>



EASY CARE

**YB54 Oxford**

REGULAR ♂ 2905401 S-5XL

SLIM ♂ 2905402 XS-XXL

WOMAN ♀ 2905403 XS-4XL

This leisure Oxford shirt captures the timeless preppy aesthetic with features like a box pleat at the back and a soft button-down collar, but it ushers in a new era in fabric technology. Created from a blend of long-staple cotton, Tencel (lyocell), and Elastane, this shirt delivers exceptional performance. The luxurious handfeel and appearance from the lyocell, combined with extreme stretch comfort from elastane, redefine leisurewear. Enjoy the added convenience of Easy Care – simply wash, grab, and go. Note that our Leisure models are 3cm shorter than our business models.

OXFORD WEAVE, SOLID COLOR. 71% LONG STAPLE COTTON, 25% TENCEL™, 4% ELASTANE. 160 G/M<sup>2</sup>. STRETCH. EASY-CARE TREATMENT. PEARL-WHITE BUTTONS AND RAISED PLACKET. SOFT ROUND EDGE CUFF, WITH CUFFLINK HOLE. CHEST POCKET ON MEN'S STYLE.



J. HARVEST & FROST  
CORPORATE SHIRTMAKER

M  
39/40

SLIM FIT



#### REDUCING PLASTIC & EMBRACING RECYCLED MATERIALS

At J. Harvest & Frost, we are dedicated to sustainability by actively reducing plastic use across our products. We've eliminated all plastic components from our shirt packaging, choosing instead eco-friendly alternatives. Additionally, we use a high percentage of recycled textiles, including elastane and polyester, to minimize waste and contribute to a circular economy.

#### OEKO-TEX STANDARD 100 CERTIFICATION

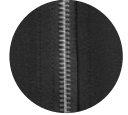
To ensure our garments meet high standards of safety and environmental care, we are integrating OEKO-TEX Standard 100 certification into many of our products. This certification guarantees that our fabrics are thoroughly tested and free from harmful substances, making them safe to wear and better for the planet.



**STRETCH**



600  
NAVY



900  
BLACK



WRINKLE  
RESIST 5/6



STRETCH  
4/6



WEIGHT  
236 G/M<sup>2</sup>



RECYCLED  
MATERIALS



### Modern Zip Overshirt

MAN ♂ 2962201 XS-4XL WOMAN ♀ 2962203 XXS-4XL

This Overshirt is a sibling to our Patch Pocket Overshirt. Made in a comfortable stretch fabric, partly crafted from recycled material. Perfect to wear over a shirt or a T-shirt for a smart casual look. Combine it with Modern Trousers for the perfect Modern Suit look!

52% COTTON 44% RECYCLED POLYESTER 4% ELASTANE



TRAVEL PLAN  
HARRIS JONES  
JOURNALS TO THE  
THE NEW  
A LITTLE  
MAGAZINE





600  
NAVY



900  
BLACK



STRETCH



WRINKLE  
RESIST 5/6



STRETCH  
4/6



WEIGHT  
236 G/M<sup>2</sup>



RECYCLED  
MATERIALS



STANDARD  
100  
52 23-304  
RISE

### Patch Pocket Overshirt Unisex

UNISEX 2962101 XXS-4XL

If you think a blazer is too fancy for the occasion – the Patch Pocket Overshirt is the perfect piece to wear over a shirt or t-shirt. Still well-dressed, but not as formal as a blazer. It is made of a modern stretch fabric, partly crafted from recycled materials. Three patch pockets and one inside pocket. Designed in a unisex fit Pair with our Modern Trousers for a "Modern Suit"-look.

52% COTTON 44% RECYCLED POLYESTER 4% ELASTANE





600  
NAVY



900  
BLACK



STRETCH



WRINKLE  
RESIST 5/6



STRETCH  
4/6



WEIGHT  
236 G/M<sup>2</sup>



RECYCLED  
MATERIALS



STANDARD  
100  
SE 23-304  
RISE

Modern Trousers

MAN ♂ 2962221 XS-4XL

WOMAN ♀ 2962223 XXS-4XL

These comfortable trousers with a stretch waist make you look and feel good all day. Pair them with the Patch Pocket Overshirt or Modern Zip Overshirt for a full Modern Suit. Perfect with boots or sneakers.

52% COTTON 44% RECYCLED POLYESTER 4% ELASTANE



600  
NAVY



900  
BLACK



WRINKLE  
RESIST 4/6



STRETCH  
4/6



WEIGHT  
131 G/M<sup>2</sup>



KNITTED  
FABRIC

### Casual Blazer

MAN ♂ 2964001 46-60    WOMAN ♀ 2964003 34-46

From a distance, it might look like a formal blazer, but up close, it's a soft, casual dream. The jersey fabric is extremely comfortable, lightweight and stretchy. With its wrinkle resist, it's perfect for travel. You'll both look and feel your best in this hybrid, sweatshirt-meets-overshirt-meets-blazer. We encourage you to match it with shirts from any of our Bows. Dress it up or dress it down, all year around. Black color crafted in organic cotton and recycled polyester. Meanwhile the navy color is under transition to organic cotton and recycled polyester.

60% COTTON, 40% POLYESTER (BLACK COLOR IN ORGANIC / RECYCLED POLYESTER) (NAVY COLOR UNDER TRANSITION)







# Responsibility & sustainability

## CLIMATE IMPACT AND EMISSIONS

Research shows that 80 % of the climate impact from Swedish clothing comes from the production phase\*. By doubling the active lifespan of a garment, the climate impact can be almost halved. Thus, the most important thing we can do is to increase the longevity of the products. That is why classic design and quality products - a concept that will never be out-of-fashion - is the very core of everything we do. In addition, work actively with our suppliers regarding energy efficiency, energy source and production techniques to further reduce our total impact.

A significant share of a garment's total environmental footprint is traceable to the choice of material. Therefore, we strive to use more preferred materials - such as recycled polyester and organic cotton - whenever possible. However, all materials have advantages and disadvantages from a sustainability perspective and priority is always quality and durability to enable a long lifecycle.

For transportation, that also significantly contributes to greenhouse gas emissions, we have to main strategies. Firstly, we constantly work with evaluating our processes to streamline our routines and plan our purchases well in advance. Within the New Wave Group, shipments of different sister companies are clubbed together as much as possible so that containers are always optimally filled during transport. We are also very careful which partners we choose to work with and only use well-known carriers we know are at the forefront from a sustainability perspective, both for sea freight and land transport. Secondly, we strive to influence the transportation companies that we are working with. New Wave Group is a member of "Clean Shipping Index", that aims to impact the shipping companies to use cleaner vessels by ranking the most high-performing ships.

## PROGRESSIVE WORK WITH CHEMICALS

All suppliers must follow the requirements in our Restricted Substance List. The list has been designed in accordance with legislation such as REACH, but also taking industry recommendations and standards such as Oeko Tex into account. Through our parent company New Wave Group, we take part of the Swedish Chemicals Group organized by RISE to receive the most updated information on chemical legislation and developments. With this information we can actively work to reduce and replace chemicals in line with best available techniques.

## IMPROVING WORKING CONDITIONS

We are aware of the great responsibility that comes with sourcing goods in countries which have not come as far as us when it comes to working conditions and environmental issues. We must ensure that the business operations of our suppliers respect national requirements as well as international conventions on human rights. Successful work requires devotion and patience. Many of the challenges we face are global problems like poverty and malfunctioning welfare systems. In this sense, social compliance does not offer a quick fix. We believe it is essential to be presented on-site. For this reason, we have local offices in Asia taking care of the everyday work with supplier auditing, monitoring and dialogue. Our full-time CSR staff are educated and well-experienced on labor conditions and environmental aspects of the production sites. Their work is leading the development.

## CODE OF CONDUCT - AMFORI BSCI

Our Code of Conduct summarizes what we expect from all our suppliers when it comes to social and environmental responsibility. It contains requirements such as minimum wage, working hours, prohibition of child labor and several other requirements from global frameworks such as the ILO Conventions and the UN Declaration of Human Rights. Through New Wave Group we are a member of amfori BSCI (Business Social Compliance Initiative) and have adopted the amfori BSCI Code of Conduct. Today, more than 2000 companies all over the world have joined amfori BSCI and have adopted the code. Together we reach out to approximately 30 000 unique suppliers worldwide, which empowers our voice and influence in social dialogue.

In addition to internal audits and supplier visits, we are obliged to implement and follow up the Code of Conduct through third-party audits. Amfori BSCI is a commitment, and the most important work begins when the inspection is completed, and the findings are to be remedied. Therefore, it is not permitted to use amfori BSCI as a label or a guarantee for individual products. The amfori BSCI logo may only be used to prove membership so that the customer can feel confident that we take long-term responsibility - even for suppliers who need to improve.



#### INTERNATIONAL ACCORD

New Wave Group has signed the International Accord for Health and Safety in the Textile and Garment Industry. The original Accord – or the Accord on Fire and Building Safety in Bangladesh – came into force in 2013, only weeks after the Rana Plaza disaster where a factory building collapsed. New Wave Group signed the agreement, which was a legally binding agreement for improved safety in the textile industry in Bangladesh with focus on structural, electrical and fire safety. The agreement meant, among other things, that factories undergo electrical and building inspections as well as training and education in fire safety. Now the original Accord has developed into the International Accord, which New Wave Group has also signed. In addition to fire and building safety, the International Accord also covers general work environment, and the ambition is to expand the program to other production countries, hence the name change. The Accord is a unique initiative that has a significant impact on the daily life of millions of textile workers. We are proud to be a part of this initiative.

#### RECYCLING FOR A SUSTAINABLE SOCIETY

To collect and recycle waste packages is a wonderful way to reduce environmental impact and create cradle-to-cradle circulation. We embrace the national collecting system where we operate. In Sweden, we are affiliated with FTI (Förpackningsinsamlingen) and comply with Producer Responsibility obligations.

#### PREPARING FOR UPCOMING LEGISLATIONS

Driven by the European Green Deal, we are facing many new laws and regulations related to sustainability the coming years. For example, the Corporate Sustainability Reporting Directive (CSRD), and the Ecodesign for Sustainable Products Regulation (ESPR). All place higher demands on traceability and transparency and will have a great impact on our operations in the future. Therefore, we put a lot of focus on working our processes and introducing support systems to be able to manage increased demands on information and transparency.

To learn more about our work with Sustainability, visit [www.jobmantextet.se](http://www.jobmantextet.se)

\* Source: Mistra Future Fashion 2019

## MEMBERSHIPS & COMMITMENTS



EU COMMITMENTS  
AND REGULATIONS

REACH

EUROPEAN  
GREEN DEAL

RI  
SE

International  
**ACCORD**  
for Health and Safety in the Textile and Garment Industry

**amfori** @  
Trade with purpose

OEKO  
TEX®







600  
NAVY



900  
BLACK



909  
GREY MELANGE



910  
LIGHT GREY  
MELANGE



**Merino V**

MAN ♂ 2930101 S-4XL WOMAN ♀ 2930103 XS-3XL

We mixed extra-fine Wool/ Cotton yarn to get an all-season garment and benefits from 2 natural fibers. To keep up our responsible work as a brand, we use certified wool and carefully selected long staple U.S. Pima cotton. You can wash it in a washing machine, but keep in mind, this is a Merino garment, and have benefits of not needing to be washed so often, simply air it out when needed.

The yarn is a compact yarn with extra high twist. We added "super wash"-treatment for less pilling. In addition we made it with long staple U.S. Pima Cotton. This way we can make sure of high quality, soft touch and high performance. We aim for the best only. High quality & high performance.

70% CERTIFIED MERINO WOOL, 30% PIMA COTTON



600  
NAVY



900  
BLACK



909  
GREY MELANGE



910  
LIGHT GREY  
MELANGE



WRINKLE  
RESIST 2/6



STRETCH  
4/6



WEIGHT  
280 G/M<sup>2</sup>



MERINO  
WOOL

### Merino U

MAN ♂ 2930201 S-4XL

WOMAN ♀ 2930203 XS-3XL

We mixed extra-fine Wool/ Cotton yarn to get an all-season garment and benefits from 2 natural fibers. To keep up our responsible work as a brand, we use certified wool and carefully selected long staple U.S. Pima cotton. You can wash it in a washing machine, but keep in mind, this is a Merino garment, and have benefits of not needing to be washed so often, simply air it out when needed.

The yarn is a compact yarn with extra high twist. We added "super wash"-treatment for less pilling. In addition we made it with long staple U.S. Pima Cotton. This way we can make sure of high quality, soft touch and high performance. We aim for the best only. High quality & high performance.

70% CERTIFIED MERINO WOOL 30% PIMA COTTON





900  
BLACK



WRINKLE  
RESIST 4/6



STRETCH  
0/6



WEIGHT  
205 G/M<sup>2</sup>



RECYCLED  
MATERIALS

### The Car Coat

MAN ♂ 2990301 S-3XL

WOMAN ♀ 2990303 XS-XXL

This is a classic, light padded ¾ coat that goes together with literally anything. Wear it over a college sweater or a suit. Either way, you will look sharp. The fabrics breathes well and is water repellent. The coat has two front pockets with button closing and one inside pocket. It's in regular fit, perfect as an outer layer; wear over a shirt, sweater and blazer.

SHELL FABRIC: 100% RECYCLED POLYESTER. PADDING: 100% RECYCLED POLYESTER



J. HARVEST & FROST  
CORPORATE SHIRTMAKER

SLIM FIT



THE  
J. HARVEST & FROST  
SALE

LEGACY ITEMS THAT  
DESERVES YOUR  
ATTENTION.

**IB33 Linen**

REGULAR ♂ 2903301 S-4XL SLIM ♂ 2903302 XS-XXL WOMAN ♀ 2903303 XS-4XL

PLAIN WEAVE, SOLID 2 TONE COLOR. 100% LINEN, 119 G/M<sup>2</sup>. SUPERSOFT GARMENT WASH. MACHINE WASHABLE. LONG SLEEVE. SOFT ROUND EDGE CUFF WITH EXTRA CUFF

LINKS OPENING. CLASSIC, 2,5 MM-THICK BUTTONS.

**PB48 Jacquard**

REGULAR ♂ 2904801 S-4XL SLIM ♂ 2904802 XS-XXL WOMAN ♀ 2904803 XS-4XL

BLUE TONED JAQUARD FABRIC, WOVEN IN A FINE MICRO-PATTERN. 100% LONG STAPLE COMPACT COTTON- DOUBLE 100'S. 130 G/M<sup>2</sup>. WITH NEW AND INNOVATIVE MECHANICAL STRETCH. NON-IRON PATENT-

ED ENVIRONMENTAL TREATMENT. TAPED MAIN-SEAMS. LONG SLEEVE. SOFT ROUND EDGE -CUFF, WITH EXTRA BUTTONHOLE FOR CUFFLINKS. PEARL-LIKE BUTTONS.

510  
SKY BLUE

566  
BLUE PATTERN



601  
NAVY FLORAL

600  
NAVY

**IB37**

REGULAR ♂ 2903701 S-4XL SLIM ♂ 2903702 XS-XXL WOMAN ♀ 2903703 XS-4XL

NAVY BACKGROUND WITH WHITE FLORAL PRINT, POPLIN WEAVE. 100% COMPACT COTTON. EASY CARE. LONG SLEEVE. SOFT ROUND EDGE CUFF WITH BUTTONHOLE

FOR CUFFLINKS. CLASSIC, 2,5 MM-THICK BUTTONS.

**IB34 Pique Knit**

REGULAR ♂ 2903401 S-4XL SLIM ♂ 2903402 XS-XXL WOMAN ♀ 2903403 XS-4XL

KNITTED 100% COMPACT COTTON. SOFT TREATMENT. LONG SLEEVE. SOFT ROUND EDGE CUFF WITH EXTRA BUTTONHOLE FOR CUFFLINKS. CLASSIC, PEARL-LOOK 2,5 MM-

THICK BUTTONS.

**IB131 Pique Knit**

REGULAR ♂ 2913101 S-4XL SLIM ♂ 2913102 XS-XXL

100% LONG STAPLE 2-PLY COMPACT COTTON, PIQUÉ-KNITTED, 135 G/M<sup>2</sup>, 100% LONG-STAPLE COMPACT COTTON. 360° STRETCH. LUXURIOUS, 4 MM THICK, NAVY BUTTONS.

055  
BLUE PRINT



**IB133 Polo S/S Pique Knit**

MAN ♂ 2913300 XS-4XL

61% COTTON 20% RECYCLED POLYESTER  
19% LINEN

115  
SKYBLUE



**IB133 S/S Pique Knit**

MAN ♂ 2913311 XS-4XL

61% COTTON 20% RECYCLED POLYESTER  
19% LINEN



900  
BLACK

**Classic Blazer 20**

MAN ♂ 2962001 44-62 WOMAN ♀ 2962003 32-48

86% WOOL, 8,5% POLYESTER + 5% LYCRA, 0,5% ANTISTATIC  
HIGH PERFORMANCE 4-WAY STRETCH FABRIC.  
BREATHABLE, LIGHTWEIGHT 175 GRAM ENVIRONMENTAL FRIENDLY WATER REPELLENT FINISH.  
TURN UP CHEST POCKET INTERIOR AS HANDKERCHIEF  
TWO-BUTTON CLOSURE.  
DOUBLE VENTED BACK HEM FOR MAN

BLAZER. (NO VENTS FOR WOMAN BLAZER)  
WELT POCKET AT CHEST AND 2 FLAP POCKETS AT WAIST.  
SLEEVES WITH 4 KISSING BUTTONS.  
REGULAR FIT (BETWEEN SLIM AND REGULAR) FOR BOTH MAN & WOMAN  
FULLY LINED. SOLID LINING IN BODY + PATTERNED LINING IN SLEEVE.  
4 INSIDE POCKETS.



900  
BLACK

600  
NAVY

**Classic Trouser**

MAN 2966121 44-62

89% WOOL, 6% POLYESTER, 5% LYCRA, 0,5% ANTISTATIC  
KNEE LINED: 55% POLYESTER, 45% VISCOSE  
HIGH PERFORMANCE 4-WAY STRETCH FABRIC, BREATHABLE, LIGHTWEIGHT 175 GRAM, ENVIRONMENTAL FRIENDLY WATER REPELLENT FINISH.  
REGULAR FIT.

STRAIGHT LEG.  
FLAT FRONT.  
WELT POCKET AT BACK, FRONT POCKET IN SIDE WITH AMF STITCHING AT WAIST.  
HOOK AND YKK ZIPPER IN FRONT WITH AMF STITCHING AT COVER.



## INDEX

|                                  |    |                               |    |                           |    |
|----------------------------------|----|-------------------------------|----|---------------------------|----|
| BB60 TWILL                       | 8  | PB144 BRUSHED JACQUARD        | 43 | YB50 TWILL                | 16 |
| CASUAL BLAZER                    | 82 | PB146 BEDFORD                 | 41 | YB51 TWILL                | 32 |
| CREPE SATIN BLOUSE               | 21 | PB147 SUPER STRETCH           | 71 | YB54 OXFORD               | 73 |
| GB01 TWILL                       | 12 | PB49 JACQUARD                 | 37 | YB55 JACQUARD             | 36 |
| GB02 TWILL STRETCH               | 14 | PATCH POCKET OVERSHIRT UNISEX | 79 | YB56 TWILL                | 35 |
| GIFTBOX SOLID HANKIE & LABEL PIN | 53 | RB120 TWILL                   | 23 |                           |    |
| GIFTBOX SOLID PAISLEY TIE        | 53 | RB121 OXFORD                  | 33 |                           |    |
| GIFTBOX SOLID SCARF              | 53 | RB122 TWILL                   | 26 |                           |    |
| IB131 PIQUE KNIT                 | 66 | RB123 ROYAL TWILL             | 27 | SALE                      |    |
| IB132 INTERLOCK KNIT             | 65 | RB20 TWILL                    | 22 | CLASSIC BLAZER 20         | 97 |
| IB132 S/S INTERLOCK KNIT         | 64 | SIGNATURE SUIT BLAZER         | 47 | CLASSIC TROUSER           | 97 |
| IB135 PIQUE KNIT                 | 69 | SIGNATURE SUIT SKIRT          | 48 | IB131 PIQUE KNIT          | 97 |
| MERINO U                         | 91 | SIGNATURE SUIT TROUSER        | 49 | IB133 POLO S/S PIQUE KNIT | 97 |
| MERINO V                         | 90 | SIGNATURE SUIT VEST           | 46 | IB133 S/S PIQUE KNIT      | 97 |
| MODERN TROUSER                   | 81 | THE CAR COAT                  | 93 | IB33 LINEN                | 96 |
| MODERN ZIP OVERSHIRT             | 76 | YB 57 KING KNIT               | 61 | IB34 PIQUE KNIT           | 96 |
| PB142 OXFORD                     | 40 | YB50 TWILL POCKET             | 19 | IB37                      | 96 |
| PB143 TWILL                      | 42 | YB50 TWILL S/S                | 18 | PB48 JACQUARD             | 96 |

REGULAR FIT SHIRTS



REGULAR FIT

| SIZE                                | S     | M     | L     | XL    | XXL   | 3XL   | 4XL   | 5XL   |
|-------------------------------------|-------|-------|-------|-------|-------|-------|-------|-------|
| NECK SIZE                           | 37/38 | 39/40 | 41/42 | 43/44 | 45/46 | 47/48 | 49/50 | 51/52 |
| A) NECK FIT                         | 38    | 40    | 42    | 44    | 46    | 48    | 50    | 52    |
| B) 1/2 CHEST WIDTH                  | 53    | 56    | 59    | 62    | 65    | 69    | 73    | 77    |
| C) 1/2 WAIST WIDTH                  | 51    | 54    | 57    | 60    | 63    | 67    | 71    | 75    |
| D) BODY LENGTH FROM SHOULDER POINT* | 79    | 80,5  | 82    | 83,5  | 84    | 86    | 88    | 90    |
| E) SLEEVE LENGTH                    | 65    | 66    | 67    | 68    | 68    | 69    | 69    | 69    |

\* Body length is 3 cm shorter for shirts in the Casual or Knitted category.

TAILORED FIT SHIRTS



TAILORED FIT

| SIZE                               | XS    | S     | M     | L     | XL    | XXL   |
|------------------------------------|-------|-------|-------|-------|-------|-------|
| NECK SIZE                          | 35/36 | 37/38 | 39/40 | 41/42 | 43/44 | 45/46 |
| A) NECK FIT                        | 36    | 38    | 40    | 42    | 44    | 46    |
| B) 1/2 CHEST WIDTH                 | 48,5  | 51,5  | 54,5  | 57,5  | 60,5  | 63,5  |
| C) 1/2 WAIST WIDTH                 | 45,5  | 48,5  | 51,5  | 54,5  | 57,5  | 60,5  |
| D) BODY LENGTH FROM SHOULDER POINT | 73,5  | 75    | 76,5  | 78    | 79,5  | 80,5  |
| E) SLEEVE LENGTH                   | 64    | 65    | 66    | 67    | 68    | 68    |

SLIM FIT SHIRTS



SLIM FIT

| SIZE                                | XS    | S     | M     | L     | XL    | XXL   |
|-------------------------------------|-------|-------|-------|-------|-------|-------|
| NECK SIZE                           | 35/36 | 37/38 | 39/40 | 41/42 | 43/44 | 45/46 |
| A) NECK FIT                         | 36    | 38    | 40    | 42    | 44    | 46    |
| B) 1/2 CHEST WIDTH                  | 47    | 50    | 53    | 56    | 59    | 62    |
| C) 1/2 WAIST WIDTH                  | 43    | 46    | 49    | 52    | 55    | 58    |
| D) BODY LENGTH FROM SHOULDER POINT* | 76    | 78    | 79,5  | 81    | 82,5  | 83    |
| E) SLEEVE LENGTH                    | 64    | 65    | 66    | 67    | 68    | 68    |

\* Body length is 3 cm shorter for shirts in the Casual or Knitted category.

WOMAN RELAXED



WOMAN RELAXED

| SIZE                               | XS   | S    | M    | L    | XL   | XXL  | 3XL  | 4XL  |
|------------------------------------|------|------|------|------|------|------|------|------|
| NUMERIC SIZE                       | 34   | 36   | 38   | 40   | 42   | 44   | 46   | 48   |
| A) NECK FIT                        | 38,5 | 39,5 | 40,5 | 41,5 | 42,5 | 43,5 | 44,5 | 45,5 |
| B) 1/2 CHEST WIDTH                 | 51,5 | 53,5 | 55,5 | 57,5 | 59,5 | 61,5 | 63,5 | 65,5 |
| C) 1/2 WAIST WIDTH                 | 51,7 | 53,7 | 55,7 | 57,7 | 59,7 | 61,7 | 63,7 | 65,7 |
| D) BODY LENGTH FROM SHOULDER POINT | 70,5 | 72   | 73,5 | 75   | 76,5 | 78   | 79,5 | 81   |
| E) SLEEVE LENGTH                   | 59,5 | 60,5 | 61,5 | 62,5 | 63,5 | 64,5 | 65,5 | 66,5 |

WOMAN CONTEMPORARY



WOMAN CONTEMPORARY

| SIZE                               | XS   | S    | M    | L    | XL | XXL  | 3XL  | 4XL  |
|------------------------------------|------|------|------|------|----|------|------|------|
| NUMERIC SIZE                       | 34   | 36   | 38   | 40   | 42 | 44   | 46   | 48   |
| A) NECK FIT                        | 36,5 | 37,5 | 38,5 | 39,5 | 41 | 42,5 | 44,5 | 46,5 |
| B) 1/2 CHEST WIDTH                 | 47   | 49   | 51   | 53   | 55 | 57   | 61   | 65   |
| C) 1/2 WAIST WIDTH                 | 43   | 45   | 47   | 49   | 51 | 53   | 57   | 61   |
| D) BODY LENGTH FROM SHOULDER POINT | 67   | 68   | 69   | 70   | 71 | 72   | 73   | 74   |
| E) SLEEVE LENGTH                   | 60,5 | 61,5 | 62,5 | 63,5 | 64 | 64,5 | 65   | 65   |

WOMAN



WOMAN

| SIZE                               | XS   | S    | M    | L    | XL   | XXL  | 3XL  | 4XL  |
|------------------------------------|------|------|------|------|------|------|------|------|
| NUMERIC SIZE                       | 34   | 36   | 38   | 40   | 42   | 44   | 46   | 48   |
| A) NECK FIT                        | 38   | 39   | 40   | 41   | 42,5 | 44   | 46   | 48   |
| B) 1/2 CHEST WIDTH                 | 45   | 47   | 49   | 51   | 53   | 55   | 59   | 63   |
| C) 1/2 WAIST WIDTH                 | 39,5 | 41,5 | 43,5 | 45,5 | 47,5 | 49,5 | 53,5 | 57,5 |
| D) BODY LENGTH FROM SHOULDER POINT | 64,5 | 66   | 67,5 | 69   | 70,5 | 72   | 74   | 76   |
| E) SLEEVE LENGTH                   | 59,5 | 60,5 | 61,5 | 62,5 | 63   | 63,5 | 64   | 64   |

All measurements are indicative with minimum tolerance of 1 cm. Measurements in cm.



### SIGNATURE SUIT BLAZER

| MAN, STANDARD | STANDARD         | 44   | 46 | 48   | 50   | 52   | 54   | 56 | 58 | 60   | 62   | Tolerance |
|---------------|------------------|------|----|------|------|------|------|----|----|------|------|-----------|
|               | 1/2 Chest        | 51   | 53 | 54   | 56   | 58   | 60   | 62 | 65 | 70   | 72   | 1         |
|               | 1/2 Waist        | 45   | 47 | 49   | 51   | 53   | 55   | 57 | 61 | 66   | 70   | 1         |
|               | Sleeve Length    | 61,5 | 63 | 64,5 | 65,5 | 66,5 | 67,5 | 68 | 68 | 68,5 | 68,5 | 1         |
|               | Back Body Length | 70   | 71 | 72   | 74   | 75,5 | 77   | 78 | 79 | 79   | 80   | 1         |

| MAN, EXTRA LONG | EXTRA LONG       | 46L | 48L  | 50L  | 52L  | 54L  | 56L |  |  |  |  | Tolerance |
|-----------------|------------------|-----|------|------|------|------|-----|--|--|--|--|-----------|
|                 | 1/2 Chest        | 53  | 54   | 56   | 58   | 60   | 62  |  |  |  |  | 1         |
|                 | 1/2 Waist        | 47  | 49   | 51   | 53   | 55   | 57  |  |  |  |  | 1         |
|                 | Sleeve Length    | 66  | 67,5 | 68,5 | 69,5 | 70,5 | 71  |  |  |  |  | 1         |
|                 | Back Body Length | 74  | 75   | 77   | 78,5 | 80   | 81  |  |  |  |  | 1         |

*Difference from standard: 3 cm longer Back Body Length, 3 cm longer Sleeve Length*

| MAN, SHORT & WIDE | SHORT & WIDE     | 46SW | 48SW | 50SW | 52SW | 54SW | 56SW |  |  |  |  | Tolerance |
|-------------------|------------------|------|------|------|------|------|------|--|--|--|--|-----------|
|                   | 1/2 Chest        | 53   | 54   | 56   | 58   | 60   | 62   |  |  |  |  | 1         |
|                   | 1/2 Waist        | 49   | 51   | 53   | 55   | 57   | 59   |  |  |  |  | 1         |
|                   | Sleeve Length    | 60   | 61,5 | 62,5 | 63,5 | 64,5 | 65   |  |  |  |  | 1         |
|                   | Back Body Length | 68   | 69   | 71   | 72,5 | 74   | 75   |  |  |  |  | 1         |

*Difference from standard: 3 cm shorter Back Body Length, 3 cm shorter Sleeve Length. 2 cm wider 1/2 Waist.*

| WOMAN, STANDARD | STANDARD W       | 32   | 34   | 36   | 38   | 40   | 42   | 44   | 46   | 48   |  | Tolerance |
|-----------------|------------------|------|------|------|------|------|------|------|------|------|--|-----------|
|                 | 1/2 Chest        | 41   | 43   | 45   | 47   | 49   | 51   | 53,5 | 56   | 59   |  | 1         |
|                 | 1/2 Waist        | 36,5 | 38,5 | 40,5 | 42,5 | 44,5 | 46,5 | 49   | 51,5 | 54,5 |  | 0,5       |
|                 | Sleeve Length    | 59   | 60   | 61   | 62   | 63   | 64   | 65   | 65,5 | 65,5 |  | 1         |
|                 | Back Body Length | 58   | 59   | 60   | 61   | 62   | 63   | 64   | 64,5 | 65   |  | 1         |

### SIGNATURE SUIT VEST

| MAN, STANDARD | STANDARD         | 44 | 46 | 48 | 50 | 52 | 54 | 56 | 58 | 60 | 62 | Tolerance |
|---------------|------------------|----|----|----|----|----|----|----|----|----|----|-----------|
|               | 1/2 Chest        | 49 | 51 | 52 | 54 | 56 | 58 | 60 | 62 | 65 | 68 | 1         |
|               | 1/2 Waist        | 46 | 48 | 50 | 51 | 53 | 55 | 57 | 59 | 62 | 65 | 1         |
|               | Back Body Length | 57 | 58 | 59 | 60 | 61 | 62 | 63 | 64 | 65 | 66 | 1         |

| MAN, EXTRA LONG | EXTRA LONG       | 46L | 48L | 50L | 52L | 54L | 56L |  |  |  |  | Tolerance |
|-----------------|------------------|-----|-----|-----|-----|-----|-----|--|--|--|--|-----------|
|                 | 1/2 Chest        | 51  | 52  | 54  | 56  | 58  | 60  |  |  |  |  | 1         |
|                 | 1/2 Waist        | 48  | 50  | 51  | 53  | 55  | 57  |  |  |  |  | 1         |
|                 | Back Body Length | 61  | 62  | 63  | 64  | 65  | 66  |  |  |  |  | 1         |

*Difference from standard: 3 cm longer Back Body Length*

| WOMAN, STANDARD | STANDARD W       | 32   | 34   | 36   | 38   | 40   | 42   | 44   | 46   | 48   |  | Tolerance |
|-----------------|------------------|------|------|------|------|------|------|------|------|------|--|-----------|
|                 | 1/2 Chest        | 41   | 43   | 45   | 47   | 49   | 51   | 53,5 | 56   | 59   |  | 1         |
|                 | 1/2 Waist        | 36,5 | 38,5 | 40,5 | 42,5 | 44,5 | 46,5 | 49   | 51,5 | 54,5 |  | 1         |
|                 | Back Body Length | 48,5 | 50   | 51,5 | 53   | 54,5 | 56   | 57,5 | 59   | 60,5 |  | 1         |



# SIGNATURE

## SUIT PROGRAM

### SIGNATURE SUIT TROUSER

| MAN, STANDARD | STANDARD          | 44   | 46   | 48   | 50   | 52   | 54   | 56   | 58   | 60   | 62   | Tolerance |
|---------------|-------------------|------|------|------|------|------|------|------|------|------|------|-----------|
|               | 1/2 Waist Relaxed | 38,5 | 40,5 | 42,5 | 44,5 | 46,5 | 48,5 | 50,5 | 52,5 | 54,5 | 56,5 | 0,5       |
|               | 1/2 Bottom Width  | 16,5 | 17   | 17,5 | 18   | 18,5 | 19   | 19,5 | 20   | 20,5 | 21   | 0,5       |
|               | Inseam length     | 76   | 77,5 | 79   | 80,5 | 82   | 83,5 | 84,5 | 85,5 | 86,5 | 87,5 | 1         |

| MEN, EXTRA LONG | EXTRA LONG        |  | 46L  | 48L  | 50L  | 52L  | 54L  | 56L  |  |  |  | Tolerance |
|-----------------|-------------------|--|------|------|------|------|------|------|--|--|--|-----------|
|                 | 1/2 Waist Relaxed |  | 40,5 | 42,5 | 44,5 | 46,5 | 48,5 | 50,5 |  |  |  | 0,5       |
|                 | 1/2 Bottom Width  |  | 17   | 17,5 | 18   | 18,5 | 19   | 19,5 |  |  |  | 0,5       |
|                 | Inseam length     |  | 82,5 | 84   | 85,5 | 87   | 88,5 | 89,5 |  |  |  | 1         |

*Difference from standard: 5 cm longer Inseam Length .*

| MEN, SHORT | SHORT             |  | 46S  | 48S  | 50S  | 52S  | 54S  | 56S  |  |  |  | Tolerance |
|------------|-------------------|--|------|------|------|------|------|------|--|--|--|-----------|
|            | 1/2 Waist Relaxed |  | 40,5 | 42,5 | 44,5 | 46,5 | 48,5 | 50,5 |  |  |  | 0,5       |
|            | 1/2 Bottom Width  |  | 17   | 17,5 | 18   | 18,5 | 19   | 19,5 |  |  |  | 0,5       |
|            | Inseam length     |  | 74,5 | 76   | 77,5 | 79   | 80,5 | 81,5 |  |  |  | 1         |

*Difference from standard: 3 cm shorter Inseam Length.*

| MAN, SHORT & WIDE | SHORT & WIDE      |  | 46SW | 48SW | 50SW | 52SW | 54SW | 56SW |  |  |  | Tolerance |
|-------------------|-------------------|--|------|------|------|------|------|------|--|--|--|-----------|
|                   | 1/2 Waist Relaxed |  | 42,5 | 44,5 | 46,5 | 48,5 | 50,5 | 52,5 |  |  |  | 0,5       |
|                   | 1/2 Bottom Width  |  | 18   | 18,5 | 19   | 19,5 | 20   | 20,5 |  |  |  | 0,5       |
|                   | Inseam length     |  | 74,5 | 76   | 77,5 | 79   | 80,5 | 81,5 |  |  |  | 1         |

*Difference from standard: 2 cm wider 1/2 waist, 1 cm wider 1/2 Bottom Width, 3 cm shorter inseam length.*

| WOMAN, STANDARD | STANDARD W        | 32   | 34   | 36   | 38   | 40   | 42   | 44   | 46   | 48   |  | Tolerance |
|-----------------|-------------------|------|------|------|------|------|------|------|------|------|--|-----------|
|                 | 1/2 Waist Relaxed | 33   | 35   | 37   | 39   | 41   | 43   | 45   | 47   | 49   |  | 0,5       |
|                 | 1/2 Bottom Width  | 15,5 | 16   | 16,5 | 17   | 17,5 | 18   | 18,5 | 19   | 19,5 |  | 0,5       |
|                 | Inseam length     | 74   | 75,5 | 77   | 78,5 | 80   | 81,5 | 83   | 84,5 | 86   |  | 1         |

### SIGNATURE SUIT SKIRT

| WOMAN, STANDARD | W STANDARD   | 32   | 34   | 36   | 38   | 40   | 42   | 44   | 46   | 48   |  | Tolerance |
|-----------------|--------------|------|------|------|------|------|------|------|------|------|--|-----------|
|                 | Front Length | 47,5 | 48,5 | 49,5 | 50,5 | 51,5 | 52,5 | 53,5 | 54,5 | 55,5 |  | 1         |
|                 | 1/2 Waist    | 31   | 33   | 35   | 37   | 39   | 41   | 43   | 45   | 47   |  | 1         |
|                 | 1/2 Bottom   | 40   | 42   | 44   | 46   | 48   | 50   | 52   | 54   | 56   |  | 1         |
|                 | Slit Length  | 16,5 | 16,5 | 16,5 | 16,5 | 16,5 | 16,5 | 16,5 | 16,5 | 16,5 |  | 0,5       |

| WOMAN, EXTRA LONG | W EXTRA LONG | 32L  | 34L  | 36L  | 38L  | 40L  | 42L  | 44L  | 46L  | 48L  |  | Tolerance |
|-------------------|--------------|------|------|------|------|------|------|------|------|------|--|-----------|
|                   | Front Length | 52,5 | 53,5 | 54,5 | 55,5 | 56,5 | 57,5 | 58,5 | 59,5 | 60,5 |  | 1         |
|                   | 1/2 Waist    | 31   | 33   | 35   | 37   | 39   | 41   | 43   | 45   | 47   |  | 1         |
|                   | 1/2 Bottom   | 40   | 42   | 44   | 46   | 48   | 50   | 52   | 54   | 56   |  | 1         |
|                   | Slit Length  | 18,5 | 18,5 | 18,5 | 18,5 | 18,5 | 18,5 | 18,5 | 18,5 | 18,5 |  | 0,5       |

*Difference from standard: 5 cm longer Front Length, 2 cm longer Slit Length*

Measurements in cm.







J. HARVEST & FROST  
CORPORATE SHIRTMAKER

